

# Forage Crops

## Key to 2021 Yield or Quality Tables

Yields derived over 2 or more growing seasons are the best indicator of variety performance. Use single site year data with caution.

CV % = Coefficient of Variation. A measure of random variation in a trial. A low CV is desirable.

LSD = Least Significant Difference. Varieties must differ by the LSD to be considered significantly different from one another.

Sig Diff = Significant Difference. Indicates if a real difference exists between varieties at an individual site.

Ⓒ Indicates a variety that is protected by Plant Breeder's Rights legislation that complies with UPOV 1978.

Ⓓ Indicates a variety that is protected by, or has been applied for and is pending, Plant Breeder's Rights legislation that complies with UPOV 1991.

## Forage Variety Registration Changes

Amendments to the Seeds Act, Seeds Regulations are now in effect that streamline the variety registration process for forage varieties.

Forage crops are moved to Part III of Schedule III of the Seeds Regulations. Recommending Committees are no longer required for the registration of forage crop varieties, since the testing and merit requirements are removed. Registration still requires a standard application package to enable the CFIA to continue to protect health and safety, prevent fraud, and facilitate seed certification.



# Manitoba Agriculture Variety Guide

F O R A G E C R O P S

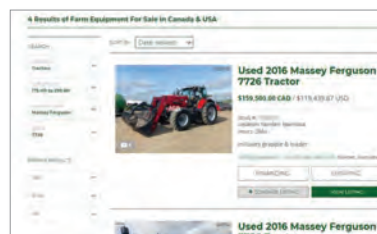
## FORAGE ADAPTATION & COMPARISON GUIDE

### LEGUMES

Forage	Primary Use	Longevity	Winter Hardiness	Tolerance to:			Preferred Climate and Growing Conditions
				Drought	Flooding	Salinity	
Alfalfa	Hay & Pasture	Long	Good	Good	Low	Low to Moderate	Widely adapted to most Manitoba soils but will not tolerate areas that have periodic flooding.
Alsike Clover	Hay & Pasture	Short	Fair	Poor	Moderate	Low	Low-lying moist areas.
Birdsfoot Trefoil	Hay & Pasture	Long	Good	Moderate	High	Low to Moderate	Moist areas.
Cicer Milkvetch	Pasture	Long	Good	Moderate to High	Low	Moderate	Widely adapted but exhibits its habit best on more coarse textured soils.
Kura Clover	Pasture	Long	Good	Moderate	Moderate	Unknown	Tolerates low fertility and soil acidity, wet soils and some flooding.
Red Clover	Hay & Pasture	Short	Poor	Low	High	Low	Best suited to humid areas with moderate temperatures.
Sainfoin	Pasture	Long	Fair	High	Low	Low	Best on brown and dark brown soil areas. In very dry areas it yields poorly. Does well on thin gravelly soils.
Sweet Clover	Hay & Pasture	Short to Long	Good	Poor	Low to Moderate	Low	Prefers well drained silt loams to clay soils that have a consistent supply of moisture.
White Clover	Hay & Pasture	2-years	Fair	Moderate to High	Low	Moderate	Especially productive on fertile soils.

### TAME GRASSES

Altai Wild Ryegrass	Pasture	Long	Excellent	High	Low	Very High	Loam & clay soils best, but grows on a wide range of soils. Doesn't appear adapted to Manitoba conditions.
Annual (Italian) Ryegrass	Hay & Pasture	Short annual 1 year	Poor	Low	High	Low	Produces best on soils of medium to high fertility and grows best with adequate moisture.
Creeping Foxtail	Pasture	Long	Good	Low	High	Moderate	Adapted to areas where reed canarygrass grows well and soil moisture is continually available.
Creeping Red Fescue	Pasture Lawn	Long	Excellent	Moderate	Moderate	Low	Does best in high rainfall areas. Will grow in wide range of soil types.
Crested Wheatgrass	Hay & Pasture	Long	Excellent	Moderate to High	Low	Low to Moderate	Adapted to dry areas with good soils but will also establish on lighter soils.
Dahurian Wild Ryegrass	Pasture	Short	Good	Moderate	Low	High	Adapted to all soil zones.
Intermediate Wheatgrass	Hay & Pasture	Short to Medium	Good	Moderate to High	Low	Low	Well drained soils with ample moisture.



AgDealer now features a new enhanced search bar and results page.

AgDealer.com is new and improved to help you find the equipment you are looking for faster. With thousands of used equipment listings, we've made it easier to find what you are looking for.

Visit the **NEW & IMPROVED!** AgDealer.com to find your equipment - **FAST!**

**AGDealer.com**

**(continued) FORAGE ADAPTATION & COMPARISON GUIDE — Tame Grasses**

**F  
O  
R  
A  
G  
E  
C  
R  
O  
P  
S**

Forage	Use	Longevity	Winter Hardiness	Tolerance to:			Preferred Climate and Growing Conditions
				Drought	Flooding	Salinity	
Kentucky Blue Grass	Pasture Lawn	Long	Excellent	Moderate	Moderate	Low	Prefers cool and humid. Grows on most soils.
Meadow Bromegrass	Hay & Pasture	Long	Good	High	Low	Low	Grows well on most soils where Smooth Brome does well.
Meadow Fescue	Pasture	Short - Medium	Good	Moderate	High	Low to Moderate	Prefers soil with good moisture and good drainage.
Meadow Foxtail	Pasture	Long	Good	Low	High	Low	Prefers cool moist conditions. High water table.
Orchard grass	Hay & Pasture	Short	Fair	Moderate	Low to Moderate	Low	Prefers moist conditions. Sandy soils are too dry for good growth unless in high rainfall area.
Perennial Ryegrass	Hay & Pasture	Short	Poor	Low	Low	Low	Needs high precipitation and fertility for high yields. Adapted to a wide range of soils.
Pubescent Wheatgrass	Hay & Pasture	Medium	Good	Moderate to High	Low	Low to Moderate	Widely adaptable with respect to precipitation, temperature, elevation, and low fertility soil.
Russian Wild Ryegrass	Pasture	Long	Excellent	Very High	Low	Very High	Can be grown on a wide range of soils. Most productive on fertile loams.
Smooth Bromegrass	Hay & Pasture	Long	Excellent	Moderate	Moderate	Low to Moderate	Well adapted to all soils in Manitoba.
Tall Fescue	Hay & Pasture	Medium	Good	Moderate	Moderate to High	High	Variety of soils. Does well on wet, poorly drained soils.
Tall Wheatgrass	Hay & Pasture	Medium	Excellent	Low	High	High	Adapted to saline and imperfectly drained alkali soils.
Timothy	Hay & Pasture	Medium	Good	Low	High	Low	Cool moist areas with good drainage.

**NATIVE GRASSES**

Awned Wheatgrass	Hay & Pasture	Medium	Good	Moderate	Moderate	Low to Moderate	Prefers moderately sandy to loam soils with good moisture and drainage. Found in moist flats, meadows and low growing bushes.
Big Bluestem	Pasture	Long	Good	Low to Moderate	Moderate	Low to Moderate	Grows under a wide range of conditions.
Green Needlegrass	Pasture	Long	Good	High	Moderate	Low to Moderate	Performs best on medium to heavy textured soils. Prefers moist sites with good drainage.
Little Bluestem	Pasture	Long	Good	High	Low	Moderate	Sandy, gravelly soils with shallow water table or where snow accumulates. Common on prairie upland.
Northern Wheatgrass	Pasture	Long	Good	Very High	Moderate	Moderate	Prefers medium to coarse textured soil.
Prairie Cord Grass	Hay & Riperian	Long	Good	Low to Moderate	High	Low to Moderate	Wide range of soils (sand to clay) - does best on seasonally dry areas, marsh edges, wet meadows, drainageways.
Reed Canarygrass	Hay & Pasture	Long	Good	Moderate	Very High	Low	Moist cool climate. Poorly drained areas subject to temporary flooding.
Side Oats Grama	Hay & Pasture	Long	Good	Moderate to High	Low	Low to Moderate	Adapted to a range of soils. Performs best on fine textured soils. Found on rocky ridges, open grasslands and hillsides.
Slender Wheatgrass	Hay & Pasture	Medium	Good	Moderate	Moderate	High	Widely adapted - prefers sandy loams.
Switch grass	Pasture	Medium	Fair	Low	Moderate	Moderate	It has potential for good summer pasture when enough moisture. Grows best on loam and sandy loams.
Western Wheatgrass	Hay & Pasture	Long	Excellent	High	Moderate to High	High	Widely adapted - prefers heavy moderately alkaline soil. Tolerates periodic flooding.

Source: Manitoba Agriculture and Resource Development — Forage Adaptation & Comparison Guide

# SILAGE CORN

## Comments:

The silage corn hybrid trial was tested and the data donated by the Manitoba Corn Committee.

The data presented is for one year only. Use with caution.

All hybrids were evaluated at a plant population of 32,000 plants per acre. Plots are planted at a higher rate and thinned to achieve the target population.

CHU <sup>1</sup>	Hybrid	Technology/ Genetic Traits <sup>2</sup>	Distributor	Elm Creek							
				65% Yield (Mt/ac)	Moisture <sup>3</sup> (%)	50% Silk (days)	TDN <sup>4</sup> (%)	ADF <sup>5</sup> (%)	NDF <sup>6</sup> (%)	Milk/Acre <sup>7</sup> (lbs/ac)	Beef/Acre <sup>8</sup> (lbs/ac)
2100	CP1440VT2P/RIB	VT2P/RIB	CROPLAN	16.1	71.9	73	72.4	24.6	42.6	16737	1494
2150	TH4076 HRRR	RR2	Thunder Seed	16.9	73.2	80	71.6	25.3	46.9	15337	1557
2150	913S	RR2	NorthStar Genetics	17.1	70.5	75	69.2	27.5	48.4	17453	1515
2150	AS1017RR EDF	RR2	PRIDE Seeds	18.1	71.0	74	73.4	23.7	41.1	17366	1700
2200	PS 2320RR	RR2	DLF Pickseed	15.2	71.6	74	74.6	22.5	41.5	15381	1456
2200	917S	RR2	NorthStar Genetics	17.5	73.5	74	66.1	30.5	53.7	17411	1485
2200	PV 61177SRR	RR2	Proven Seed	17.7	71.8	75	74.6	22.5	41.1	13811	1693
2200	MS 7420R	RR2	Maizex Seeds	15.8	71.5	73	71.3	25.6	43.9	13864	1447
2200	Riel	GT	Greenfield Genetics	16.3	74.2	74	67.5	29.2	49.8	15599	1408
2225	PS 2321VT2P RIB	GENVT2P	DLF Pickseed	14.2	71.2	74	73.8	23.2	41.4	13917	1342
2250	TH4126 RR	RR2	Thunder Seed	18.2	70.9	73	72.0	24.9	44.2	18018	1679
2250	X21080A/VT2P	VT2P/RIB	CROPLAN	15.3	71.5	73	72.0	24.9	42.9	14577	1415
2250	MS 8022R	RR2	Maizex Seeds	18.0	71.7	74	71.4	25.5	47.0	17914	1649
2250	BY Brava RR2	RR2	BrettYoung	17.4	72.5	74	72.6	24.4	43.5	16661	1624
2275	PS 2333RR	RR2	DLF Pickseed	16.6	73.8	73	71.1	25.8	43.4	15904	1512
2275	A4514RR	RR2	PRIDE Seeds	16.8	72.9	75	71.8	25.1	41.1	13455	1551
2300	PS 2420RR	RR2	DLF Pickseed	15.1	72.1	73	69.2	27.6	47.6	15564	1337
2300	TH6180 VT2P	VT2P	Thunder Seed	17.7	69.7	69	72.9	24.1	42.9	15401	1652
2300	CP2123VT2P/RIB	VT2P/RIB	CROPLAN	16.1	71.3	73	71.3	25.6	43.4	12501	1473
2300	A4705HMRR	RR2	PRIDE Seeds	16.4	73.1	70	71.5	25.4	44.6	15519	1509
2300	MS 7733DBR	VT2P	Maizex Seeds	16.2	71.2	73	72.2	24.7	45.8	15723	1497
2300	HZ 1710	Agrisure 3010	Horizon Seeds	17.6	73.3	76	69.7	27.1	47.4	16621	1578
2300	Vernon	3010	Greenfield Genetics	16.5	72.0	75	69.9	26.9	46.9	15883	1481
2350	932S	RR2	NorthStar Genetics	17.7	76.4	84	67.3	29.3	53.4	14649	1531
2350	CX20081VT2P/RIB	VT2P/RIB	CROPLAN	16.5	73.1	74	71.5	25.4	44.4	15307	1513
2350	AS1027RR EDF	RR2	PRIDE Seeds	18.7	70.9	75	73.0	24.1	41.9	16678	1753
2350	PV 61281SRIB	VT2P	Proven Seed	16.7	71.1	72	73.1	23.9	41.0	16709	1568
2350	HZ 675	Agrisure 3010	Horizon Seeds	17.8	75.1	78	69.9	26.9	47.6	15182	1595
2375	BYM2130002BV	VT2P	BrettYoung	15.7	72.3	74	73.6	23.4	42.1	14518	1485
2375	BYM2130009TR	RR2	BrettYoung	19.0	69.9	74	71.0	25.9	46.0	19959	1731
2375	CP2180VT2P/RIB	VT2P/RIB	CROPLAN	16.3	71.8	75	68.3	28.4	49.1	16844	1425
2375	HZ 1912	Agrisure 3120 EZR	Horizon Seeds	16.9	69.8	74	75.8	21.4	39.3	16073	1645
2400	PS 2563GSX RIB	GENSS	DLF Pickseed	16.0	71.3	78	67.2	29.5	50.2	14091	1381
2400	BYM2132011TV	VT2P	BrettYoung	18.1	70.0	77	69.5	27.3	47.7	14800	1612
2400	A4939G2 RIB	VT2P	PRIDE Seeds	17.0	71.4	75	71.3	25.6	45.0	16162	1557
2400	AS1047RR EDF	RR2	PRIDE Seeds	21.7	73.1	75	75.3	21.8	41.9	18212	2098
2400	PV 62282RIB	VT2P	Proven Seed	17.7	72.7	75	70.3	26.5	45.3	15626	1596
2425	DKC31-85RIB	VT2P	DEKALB	16.2	71.5	74	76.1	21.1	39.0	16305	1584
2450	PS ExSeed LF RR	RR2	DLF Pickseed	18.1	75.9	82	69.0	27.8	50.7	15219	1601
2450	TH6183 VT2P	VT2P	Thunder Seed	16.7	71.5	76	69.3	27.5	46.9	14452	1483
2450	CP2288VT2P/RIB	VT2P/RIB	CROPLAN	16.4	72.0	75	72.8	24.2	42.9	15806	1534
2450	HZ 2220	Agrisure 3010	Horizon Seeds	19.8	71.8	78	65.1	31.4	52.8	18557	1658
2500	BYM2135010TR	RR2	BrettYoung	16.3	74.7	75	71.9	25.0	44.3	13661	1504
2500	DKC33-37RIB	VT2P	DEKALB	18.0	71.2	76	70.2	26.6	44.8	16009	1623
2500	CP2315VT2P/RIB	VT2P/RIB	CROPLAN	15.6	75.0	74	70.8	26.1	45.4	14689	1420
2500	PV 62384RIB	VT2P	Proven Seed	18.2	72.5	78	66.5	30.1	51.1	15877	1555
2500	VENZA R	RR2	Maizex Seeds	18.4	74.5	80	67.3	29.4	50.5	17354	1586
2550	TH6185 VT2P	VT2P	Thunder Seed	17.9	71.5	75	69.7	27.1	46.8	15569	1603
2550	PV 62485RIB	VT2P	Proven Seed	15.8	73.8	73	68.8	27.9	48.4	16782	1395
2550	HZ 2534	Agrisure Viptera 3220 EZR	Horizon Seeds	17.0	73.8	77	68.4	28.3	49.3	15973	1487
2550	Maxx	GT	Greenfield Genetics	17.5	74.6	79	68.9	27.9	49.1	16129	1547
2575	DKC34-57RIB	VT2P	DEKALB	16.3	72.2	75	68.1	28.6	48.5	15963	1424
2575	DKC35-37RIB	VT2P	DEKALB	17.5	73.2	78	69.8	27.0	47.0	15978	1567
2600	DKC36-48RIB	VT2P	DEKALB	16.9	74.1	76	71.0	25.9	45.9	15693	1543
2650	CP2790VT2P/RIB	VT2P/RIB	CROPLAN	16.8	73.3	77	66.8	29.8	50.6	16683	1443
2675	CP2845VT2P/RIB	VT2P/RIB	CROPLAN	17.6	74.2	79	70.1	26.7	45.4	13895	1586
2675	CP2851VT2P/RIB	VT2P/RIB	CROPLAN	17.4	72.8	79	69.5	27.2	49.4	18695	1554
2700	HZ 3020	Agrisure GT	Horizon Seeds	19.5	73.2	81	71.3	25.6	45.7	15686	1784
2750	HZ 878	Agrisure Viptera 3220 EZR	Horizon Seeds	18.4	76.6	80	68.8	28.0	51.7	14753	1627
			<b>Mean</b>	16.9	72.2	75					
			CV %	10.74	2.62	0.93					
			LSD (0.05)	2.9	3.1	1					
			Sig Diff	Yes	Yes	Yes					
			<b>Planting Date</b>	6-May							
			<b>Harvest Date</b>	26-Aug							

1 Each company assigns a corn heat unit (CHU) rating to each of their hybrids. The CHU rating is a measure of relative maturity and is one criteria for choosing a hybrid which is suitable for your growing region.

2 The Canadian Seed Trade Association (CSTA) website provides a database for corn hybrids available in Canada, <https://seedinnovation.ca/corn-hybrids-database>.

3 Moisture content at harvest.

4 Total digestible nutrients (TDN)

Yields are corrected to 65% moisture content.

The Manitoba Corn Committee publishes the annual results along with more detailed lab analysis in their brochure. The brochure is available by calling the Manitoba Crop

Alliance office at 204-745-6661 or visiting their website at <https://www.mbcropalliance.ca>.

St. Pierre											
65% Yield (Mt/ac)	Moisture <sup>3</sup> (%)	50% Silk (days)	TDN <sup>4</sup> (%)	ADF <sup>5</sup> (%)	NDF <sup>6</sup> (%)	Milk/Acre <sup>7</sup> (lbs/ac)	Beef/Acre <sup>8</sup> (lbs/ac)	CHU <sup>1</sup>	Hybrid	Technology/ Genetic Traits <sup>2</sup>	Distributor
12.1	67.4	80	73.4	23.6	41.1	11498	1139	2100	CP1440VT2P/RIB	VT2P/RIB	CROPLAN
10.1	71.0	85	69.7	27.1	46.4	8113	902	2150	TH4076 HRRR	RR2	Thunder Seed
11.7	69.7	85	68.4	28.3	47.8	9916	1024	2150	913S	RR2	NorthStar Genetics
11.8	65.1	83	74.0	23.1	39.0	11365	1116	2150	AS1017RR EDF	RR2	PRIDE Seeds
9.8	66.4	79	72.7	24.3	42.2	9374	912	2200	PS 2320RR	RR2	DLF Pickseed
10.5	70.1	85	69.6	27.2	47.9	8930	935	2200	917S	RR2	NorthStar Genetics
10.4	70.7	84	76.4	20.9	37.8	9209	1014	2200	PV 61177SRR	RR2	Proven Seed
10.9	65.2	80	73.3	23.8	42.2	10646	1024	2200	MS 7420R	RR2	Maizex Seeds
11.7	69.6	83	71.0	25.8	46.8	10319	1065	2200	Riel	GT	Greenfield Genetics
11.0	68.0	79	70.6	26.2	45.2	9507	1001	2225	PS 2321VT2P RIB	GENVT2P	DLF Pickseed
11.3	68.9	80	73.3	23.7	43.8	10258	1058	2250	TH4126 RR	RR2	Thunder Seed
9.9	69.8	82	72.8	24.2	44.3	7855	929	2250	X21080A/VT2P	VT2P/RIB	CROPLAN
11.1	69.8	79	70.7	26.1	44.0	9742	1005	2250	MS 8022R	RR2	Maizex Seeds
11.2	70.8	82	72.8	24.2	43.6	9766	1050	2250	BY Brava RR2	RR2	BrettYoung
11.2	68.1	82	70.1	26.8	47.0	9510	1005	2275	PS 2333RR	RR2	DLF Pickseed
10.3	71.1	84	73.4	23.6	40.8	9030	974	2275	A4514RR	RR2	PRIDE Seeds
9.1	68.9	84	72.9	24.1	42.9	8161	849	2300	PS 2420RR	RR2	DLF Pickseed
11.2	68.3	81	69.1	27.7	49.5	10163	995	2300	TH6180 VT2P	VT2P	Thunder Seed
10.5	67.7	82	74.4	22.7	42.9	9779	1000	2300	CP2123VT2P/RIB	VT2P/RIB	CROPLAN
10.4	69.7	81	72.8	24.2	42.1	9502	973	2300	A4705HMRR	RR2	PRIDE Seeds
11.1	68.6	81	73.7	23.4	41.7	9950	1044	2300	MS 7733DBR	VT2P	Maizex Seeds
11.7	71.2	85	70.5	26.3	46.3	11328	1059	2300	HZ 1710	Agrisure 3010	Horizon Seeds
9.6	70.6	84	71.1	25.8	46.2	9046	874	2300	Vernon	3010	Greenfield Genetics
10.2	74.4	93	69.0	27.8	49.8	7769	904	2350	932S	RR2	NorthStar Genetics
11.7	70.2	84	71.8	25.2	44.2	10078	1076	2350	CX20081VT2P/RIB	VT2P/RIB	CROPLAN
10.7	68.3	86	71.1	25.8	43.5	9919	979	2350	AS1027RR EDF	RR2	PRIDE Seeds
10.7	69.5	81	73.8	23.3	43.0	10411	1010	2350	PV 61281SRIB	VT2P	Proven Seed
10.7	72.8	87	72.1	24.9	45.4	7535	986	2350	HZ 675	Agrisure 3010	Horizon Seeds
10.1	69.7	85	72.0	25.0	45.9	8104	928	2375	BYM2130002BV	VT2P	BrettYoung
11.6	71.0	83	71.9	25.0	46.1	10561	1067	2375	BYM2130009TR	RR2	BrettYoung
10.7	69.0	83	71.8	25.1	42.1	8781	986	2375	CP2180VT2P/RIB	VT2P/RIB	CROPLAN
11.8	68.0	82	71.3	25.6	42.8	11077	1077	2375	HZ 1912	Agrisure 3120 EZR	Horizon Seeds
11.2	69.5	86	71.8	25.2	43.5	9277	1029	2400	PS 2563GSX RIB	GENSS	DLF Pickseed
10.6	69.1	86	73.4	23.6	42.5	9371	1002	2400	BYM2132011TV	VT2P	BrettYoung
10.7	69.5	83	69.0	27.8	46.2	8765	946	2400	A4939G2 RIB	VT2P	PRIDE Seeds
11.7	71.8	83	66.5	30.1	50.9	9407	994	2400	AS1047RR EDF	RR2	PRIDE Seeds
11.3	69.4	82	70.2	26.6	44.2	8914	1022	2400	PV 62282RIB	VT2P	Proven Seed
10.3	68.9	80	69.1	27.7	47.1	9754	910	2425	DKC31-85RIB	VT2P	DEKALB
11.7	74.2	92	69.3	27.5	50.8	9049	1042	2450	PS ExSeed LF RR	RR2	DLF Pickseed
10.8	69.9	84	72.6	24.4	42.6	9078	1004	2450	TH6183 VT2P	VT2P	Thunder Seed
10.9	69.7	83	67.5	29.2	47.6	10008	946	2450	CP2288VT2P/RIB	VT2P/RIB	CROPLAN
11.4	70.2	86	67.1	29.6	48.7	10801	978	2450	HZ 2220	Agrisure 3010	Horizon Seeds
11.8	73.1	83	72.5	24.5	43.5	9621	1102	2500	BYM2135010TR	RR2	BrettYoung
11.1	70.4	86	73.3	23.7	42.5	9616	1041	2500	DKC33-37RIB	VT2P	DEKALB
10.4	69.1	83	74.2	22.9	41.6	9460	993	2500	CP2315VT2P/RIB	VT2P/RIB	CROPLAN
9.8	71.1	87	69.6	27.2	47.1	8595	874	2500	PV 62384RIB	VT2P	Proven Seed
11.7	73.4	90	66.3	30.2	52.4	10376	993	2500	VENZA R	RR2	Maizex Seeds
11.6	69.9	86	73.3	23.7	39.7	9495	1088	2550	TH6185 VT2P	VT2P	Thunder Seed
11.4	70.4	83	72.9	24.1	41.6	10664	1063	2550	PV 62485RIB	VT2P	Proven Seed
11.2	70.4	88	70.4	26.5	47.3	9161	1013	2550	HZ 2534	Agrisure Viptera 3220 EZR	Horizon Seeds
11.1	73.4	90	70.4	26.5	47.2	8946	998	2550	Maxx	GT	Greenfield Genetics
9.9	71.5	84	71.5	25.4	43.9	8342	904	2575	DKC34-57RIB	VT2P	DEKALB
11.3	70.0	85	70.2	26.7	47.2	9626	1020	2575	DKC35-37RIB	VT2P	DEKALB
10.1	72.6	87	71.8	25.2	43.7	7269	930	2600	DKC36-48RIB	VT2P	DEKALB
11.7	71.1	84	71.4	25.5	44.0	9470	1068	2650	CP2790VT2P/RIB	VT2P/RIB	CROPLAN
11.6	72.0	87	71.4	25.5	43.8	9420	1059	2675	CP2845VT2P/RIB	VT2P/RIB	CROPLAN
11.9	70.3	87	68.4	28.3	48.1	10611	1048	2675	CP2851VT2P/RIB	VT2P/RIB	CROPLAN
12.2	72.3	89	71.5	25.4	45.0	9767	1117	2700	HZ 3020	Agrisure GT	Horizon Seeds
10.9	74.8	91	72.1	24.9	44.9	8721	1007	2750	HZ 878	Agrisure Viptera 3220 EZR	Horizon Seeds
10.8	69.6	84				<b>Mean</b>					
9.37	1.79	1.15				<b>CV %</b>					
1.6	2.0	2				<b>LSD (0.05)</b>					
Yes	Yes	Yes				<b>Sig Diff</b>					
7-May						<b>Planting Date</b>					
8-Sep						<b>Harvest Date</b>					

5 Acid detergent fiber (ADF)

6 Neutral detergent fiber (NDF)

7 Milk per Acre was calculated using Milk 2006, a model developed by the University of Wisconsin Extension Service.

8 Beef per acre was calculated on the assumption that one pound of beef is produced for every six pounds of TDN.



## SILAGE CORN (continued)

### Comments:

The silage corn hybrid trial was tested and the data donated by the Manitoba Corn Committee.

The data presented is for one year only. Use with caution.

All hybrids were evaluated at a plant population of 32,000 plants per acre. Plots are planted at a higher rate and thinned to achieve the target population.

Yields are corrected to 65% moisture content.

The Manitoba Corn Committee publishes the annual results along with more detailed lab analysis in their brochure. The brochure is available by calling the Manitoba Crop Alliance office at 204-745-6661 or visiting their website at <https://www.mbcropalliance.ca>.

CHU <sup>1</sup>	Hybrid	Technology/ Genetic Trait <sup>2</sup>	Distributor	Arborg							
				65% Yield (Mt/ac)	Moisture <sup>3</sup> (%)	50% Silk (days)	TDN <sup>4</sup> (%)	ADF <sup>5</sup> (%)	NDF <sup>6</sup> (%)	Milk/Acre <sup>7</sup> (lbs/ac)	Beef/Acre <sup>8</sup> (lbs/ac)
2050	DKC20-23RIB	VT2P	DEKALB	8.7	63.3	74	77.0	20.2	36.9	7707	864
2050	Rustler	GT	Greenfield Genetics	9.8	66.4	74	76.9	20.4	39.7	8014	970
2075	DKC21-36RIB	VT2P	DEKALB	9.8	63.9	74	72.2	24.8	44.9	5468	910
2100	TH6875 VT2P	VT2P	Thunder Seed	10.1	67.4	72	75.3	21.8	38.9	7585	973
2100	DKC24-06RIB	VT2P	DEKALB	10.4	65.8	74	75.2	21.9	38.0	8796	1004
2100	CP1440VT2P/RIB	VT2P/RIB	CROPLAN	11.2	66.4	76	78.5	18.9	35.1	10232	1124
2150	TH4076 HDRR	RR2	Thunder Seed	10.0	69.1	78	77.6	19.7	36.4	8019	993
2150	913S	RR2	NorthStar Genetics	10.0	70.2	78	78.6	18.7	37.2	8170	1012
2150	AS1017RR EDF	RR2	PRIDE Seeds	10.5	66.8	78	75.5	21.7	41.5	8526	1016
2200	PS 2320RR	RR2	DLF Pickseed	11.4	65.1	74	77.0	20.2	36.2	8087	1122
2200	PV 61177SRR	RR2	Proven Seed	10.6	68.9	77	76.2	21.0	40.0	8809	1038
2200	PV 61377RIB	VT2P	Proven Seed	10.2	65.9	75	77.2	20.0	37.8	8087	1009
2200	MS 7420R	RR2	Maizex Seeds	11.1	64.1	74	75.9	21.3	39.7	7373	1084
2250	TH4126 RR	RR2	Thunder Seed	10.8	68.2	76	74.7	22.4	41.0	8651	1031
2250	X21080A/VT2P	VT2P/RIB	CROPLAN	9.5	67.1	75	71.1	25.7	45.9	6178	870
2250	PV 61479RIB	VT2P	Proven Seed	9.6	68.2	75	78.3	19.1	35.1	8379	963
2250	MS 8022R	RR2	Maizex Seeds	12.0	69.4	75	76.9	20.4	36.9	9119	1186
2275	PS 2333RR	RR2	DLF Pickseed	9.2	68.6	79	77.3	20.0	39.2	7226	915
2275	DKC29-89RIB	VT2P	DEKALB	9.3	67.3	77	76.7	20.5	39.4	6125	912
2275	A4514RR	RR2	PRIDE Seeds	9.6	68.5	77	72.6	24.4	43.3	7533	898
2300	PS 2420RR	RR2	DLF Pickseed	10.3	68.0	75	75.4	21.7	40.6	6992	993
2300	TH6180 VT2P	VT2P	Thunder Seed	11.8	66.5	77	74.0	23.0	40.5	9667	1122
2300	CP2123VT2P/RIB	VT2P/RIB	CROPLAN	10.5	66.4	76	75.9	21.3	37.7	7902	1019
2300	A4705HMRR	RR2	PRIDE Seeds	9.9	67.4	73	75.6	21.6	39.1	6496	964
2300	HZ 1710	Agrisure 3010	Horizon Seeds	10.5	71.1	79	77.1	20.1	38.5	8547	1040
2350	932S	RR2	NorthStar Genetics	11.8	72.8	84	74.0	23.1	42.2	7450	1119
2350	HZ 675	Agrisure 3010	Horizon Seeds	10.5	71.3	79	76.4	20.8	37.0	9312	1026
2375	HZ 1912	Agrisure 3120 EZR	Horizon Seeds	8.3	69.8	79	77.6	19.7	37.9	6658	827
2450	HZ 2220	Agrisure 3010	Horizon Seeds	11.6	69.1	80	77.9	19.5	36.6	9562	1160
<b>Mean</b>				10.3	67.9	77					
CV				7.73	2.54	2.15					
LSD (0.05)				1.3	2.8	3					
Sig Diff				Yes	Yes	Yes					
<b>Planting Date</b>				21-May							
<b>Harvest Date</b>				22-Sep							

1 Each company assigns a corn heat unit (CHU) rating to each of their hybrids. The CHU rating is a measure of relative maturity and is one criteria for choosing a hybrid which is suitable for your growing region.

2 The Canadian Seed Trade Association (CSTA) website provides a database for corn hybrids available in Canada, <https://seedinnovation.ca/corn-hybrids-database>.

3 Moisture content at harvest.

4 Total digestible nutrients (TDN).

5 Acid detergent fiber (ADF).

6 Neutral detergent fiber (NDF).

7 Milk per Acre was calculated using Milk 2006, a model developed by the University of Wisconsin Extension Service.

8 Beef per acre was calculated on the assumption that one pound of beef is produced for every six pounds of TDN.

# ANNUAL FORAGE — Yield Comparisons

The 2021 annual forage trial combined all crops and varieties in one trial with three replicates per site. The data presented is for one year only. Use with caution.

Crops were harvested at soft dough for cereals and peas and early heading for millet and sorghum.

Crop	Variety	2021 Dry Matter Yield (tonnes/acre) <sup>1</sup>		
		Arborg	Melita	Roblin
Barley	AB Advantage <sup>⓪</sup>	3.66	1.87	6.11
Barley	AB Cattelac <sup>⓪</sup>	3.54	2.14	5.22
Barley	AB Hague <sup>⓪</sup>	3.62	2.02	4.80
Oats	CDC Arborg <sup>⓪</sup>	3.33	1.79	4.86
Oats	CDC Haymaker <sup>⓪</sup>	4.04	1.01	5.41
Spring Triticale	Common <sup>2</sup>	2.34	1.50	4.02
Peas/Barley	CDC Jasper <sup>⓪</sup> /AB Advantage <sup>⓪</sup>	4.55	2.23	5.26
Peas/Oat	CDC Jasper <sup>⓪</sup> /CDC Arborg <sup>⓪</sup>	3.05	1.20	4.80
Peas	DL Delicious <sup>⓪</sup>	3.95	1.56	4.21
Yellow Foxtail Millet	Golden German <sup>2</sup>	4.31	2.44	4.31
Red Proso Millet	Cerise <sup>2</sup>	3.68	2.25	4.99
Sorghum-Sudangrass <sup>3</sup>	Common <sup>2</sup>	3.37	1.72	3.49
<b>GRAND MEAN</b> (tonnes/acre)		3.62	1.81	4.79
CV %		11.3	18.7	9.6
LSD (tonnes/acre) (0.05)		0.69	0.58	0.78
Sig Diff		Yes	Yes	Yes
<b>Seeding Date</b>		19-May	31-May	20-May
<b>Harvest Date</b>		27-Jul	28-Jul	12-Aug & 18-Sept

1 Dry matter yields measured under a one-cut system.

2 Due to lack of availability, common seed was used.

3 Delayed maturity sorghum-sudangrass

## Quality Comparisons

Crop	Variety	Forage Quality <sup>1</sup>								
		RFV (%) <sup>2</sup>			CP (%) <sup>3</sup>			TDN (%) <sup>4</sup>		
		Arborg	Melita	Roblin	Arborg	Melita	Roblin	Arborg	Melita	Roblin
Barley	AB Advantage <sup>⓪</sup>	119	125	123	12	13	12	67	68	66
Barley	AB Cattelac <sup>⓪</sup>	130	120	166	12	14	12	70	66	76
Barley	AB Hague <sup>⓪</sup>	129	126	155	12	13	12	69	68	71
Oats	CDC Arborg <sup>⓪</sup>	128	108	126	11	14	11	70	64	65
Oats	CDC Haymaker <sup>⓪</sup>	97	102	117	10	15	11	62	61	65
Spring Triticale	Common <sup>5</sup>	118	114	150	10	16	13	67	65	70
Peas/Barley	CDC Jasper <sup>⓪</sup> /AB Advantage <sup>⓪</sup>	125	112	153	13	14	13	68	64	71
Peas/Oats	CDC Jasper <sup>⓪</sup> /CDC Arborg <sup>⓪</sup>	125	113	122	12	15	12	68	63	64
Peas	DL Delicious <sup>⓪</sup>	161	111	139	18	18	16	67	56	63
Yellow Foxtail Millet	Golden German <sup>5</sup>	99	99	106	13	15	13	66	62	63
Red Proso Millet	Cerise <sup>5</sup>	103	96	111	14	11	12	66	62	65
Sorghum-Sudangrass	Common <sup>5</sup>	102	99	110	14	13	12	65	61	65
<b>Site Average (%)</b>		120	110	132	13	14	12	70	63	67

1 Quality tests were done by wet chemistry and were a composite of the three plots/site.

2 Relative feed value (RFV).

3 Crude protein (CP).

4 Total Digestive Nutrients (TDN).

5 Due to lack of availability, common seed was used.

# Distributor Contacts for Listed Varieties in Seed Manitoba 2022

Look up variety within the correct CROP KIND to find the company, then look for company phone number in the box at bottom of section.

## CORN

See Silage Corn table for specific hybrids, then check distributor table below for phone number

## ALFALFA

Cornerstone	Northstar Seed Ltd.
Dakota	Northstar Seed Ltd.
Endurance	Northstar Seed Ltd.
Perfection	Northstar Seed Ltd.
Performer	Northstar Seed Ltd.
Revolution MD (Magnet 401)	Northstar Seed Ltd.
Rugged ST	Northstar Seed Ltd.
Sidewinder	Northstar Seed Ltd.
Instinct	DLF Pickseed Canada Inc.
Vision	DLF Pickseed Canada Inc.

## BIRDSFOOD TREFOIL

Bull	DLF Pickseed Canada Inc.
Lotanova	DLF Pickseed Canada Inc.

## BROMEGRASS

AAC Maximus (Meadow)	Northstar Seed Ltd.
AC Knowles (Hybrid)	Northstar Seed Ltd.

## SWEET CLOVER

Norgold	Northstar Seed Ltd.
---------	---------------------

## FESCUE

Courtenay (Tall)	Northstar Seed Ltd.
Driftless (Meadow)	Northstar Seed Ltd.
Palatine (Tall)	Northstar Seed Ltd.
Pradel (Meadow)	Northstar Seed Ltd.
Preval (Meadow)	Northstar Seed Ltd.
Tetrax (Meadow)	Northstar Seed Ltd.
Tower (Tall)	DLF Pickseed Canada Inc.

## FORAGE BARLEY

AB Advantage	SeCan
AB Cattlelac	Alliance Seed
AB Hague	FP Geneteics

## FORAGE OAT

CDC Arborg	FP Genetics
CDC Haymaker	SeCan

## FORAGE PEA

CDC Jasper	SeCan
DL Delicious	DL Seeds

## ORCHARDGRASS

Tundra Late	Northstar Seed Ltd.
-------------	---------------------

## RYEGRASS

Elunaria (Annual)	Northstar Seed Ltd.
Polim (Perennial)	DLF Pickseed Canada Inc.

## TIMOTHY

Barpenta	Northstar Seed Ltd.
Express	Northstar Seed Ltd.
Ovation	Northstar Seed Ltd.
Tresure	Northstar Seed Ltd.
AC Alliance	DLF Pickseed Canada Inc.
Comer	DLF Pickseed Canada Inc.
Comtal	DLF Pickseed Canada Inc.
Richmond	DLF Pickseed Canada Inc.
Sahara DT	DLF Pickseed Canada Inc.
Summergraze	DLF Pickseed Canada Inc.

## CRESTED WHEATGRASS

AAC Renegade	Northstar Seed Ltd.
Kirk	Northstar Seed Ltd.

### DISTRIBUTOR - FORAGE SEED

### PHONE NUMBER

Alliance Seed	1-877-270-2890
DL Seeds	1-204-331-3611
FP Genetics	1-877-791-1045
Northstar Seed Ltd.	1-800-430-5955
DLF Pickseed Canada Inc.	1-800-263-7425
SeCan	1-800-665-7333

### DISTRIBUTOR - CORN SILAGE

### PHONE NUMBER

Bayer CropScience Canada Inc (DEKALB)	1-888-283-6847
BrettYoung	1-800-665-5015
DLF Pickseed Canada Inc (DLF Pickseed)	1-204-633-0088
Fraser Seeds Ltd (Greenfield Genetics)	1-604-857-3355
Horizon Seeds Canada Inc (Horizon Seeds)	1-855-983-7255
Maizex Seeds Inc (Maizex Seeds)	1-877-682-1720
NorthStar Genetics Ltd. (NorthStar Genetics)	1-204-262-2425
Nutrien Ag Solutions   Proven Seed	1-855-569-9444
PRIDE Seeds	1-800-265-5280
Thunder Seed Canada Inc (Thunder Seed)	1-888-684-8633
WinField United Canada (CROPLAN)	1-888-975-4769



[www.dlfpickseed.com](http://www.dlfpickseed.com)

DLF PICKSEED's focus is to help farmers with innovative and quality forage seed products.

For hay and pasture seed purchases contact:

**Tom Rinn**

2048999730  
trinn@dlfpickseed.com

**Shane Terry**

2042236184  
sterry@dlfpickseed.com

For forage and turfgrass seed production contracts:

**Marcel Greaves**

2047719929  
mgreaves@dlfpickseed.com

**Dan McGill**

2047710482  
dmcgill@dlfpickseed.com



# Growers List



F  
O  
R  
A  
G  
E  
C  
R  
O  
P  
S

## ALFALFA

S=Select; F=Foundation; R=Registered; C=Certified; ☉ Indicates Plant Breeders Rights (PBR) protection under UPOV 1978 and ☽ protected or pending under UPOV 1991.

**POWER 4.2**  
Broad Valley; Woloshyn, Richard R. ....204-372-6029 C

## BIRDSFOOT TREFOIL

**BULL**  
Middlebro; Ewacha, Curtis A. ....204-793-5273 C

**EXACT**  
Middlebro; Ewacha, Curtis A. ....204-793-5273 C

**LEO**  
Beausejour; Murash Farms Ltd. ....204-268-0211 C  
Broad Valley; Woloshyn, Stuart John ....204-372-6029 C  
Middlebro; Ewacha, Curtis A. ....204-793-5273 C

## SWEET CLOVER

**NORGOLD**  
Fisher Branch; Danelak Farms .....204-372-6236 F

## TIMOTHY

S=Select; F=Foundation; R=Registered; C=Certified; ☉ Indicates Plant Breeders Rights (PBR) protection under UPOV 1978 and ☽ protected or pending under UPOV 1991.

**CLIMAX**  
Middlebro; Ewacha, Curtis A. ....204-793-5273 C

**ENGMO**  
Middlebro; Ewacha, Curtis A. ....204-793-5273 C

**RICHMOND**  
Middlebro; Ewacha, Curtis A. ....204-793-5273 C

**SAHARA DT**  
Middlebro; Ewacha, Curtis A. ....204-793-5273 C

**ZENYATTA**  
Middlebro; Ewacha, Curtis A. ....204-793-5273 C

## TRITICALE

**SUNRAY**  
Crystal City; Buchanan Seeds .....204-873-2661 C

**SEED YOU CAN COUNT ON.**

- Total Ration Solutions testing program used to identify hybrids with maximum silage yield potential and quality
- Line-up includes EDF (Effective Digestible Fibre) and EDP (Effective Dual Purpose) hybrids for end use flexibility

**PRIDE SEEDS**

**CANTERRA SEEDS**  
PROUD DISTRIBUTOR

**FOCUSSED ON PERFORMANCE** | **PRIDSEEDS.COM** | 1.800.265.5280 | | PRIDE and the PRIDE Seeds Design are registered trademarks of AgReliant Genetics and its affiliated companies. © 2021 AgReliant Genetics, Inc.