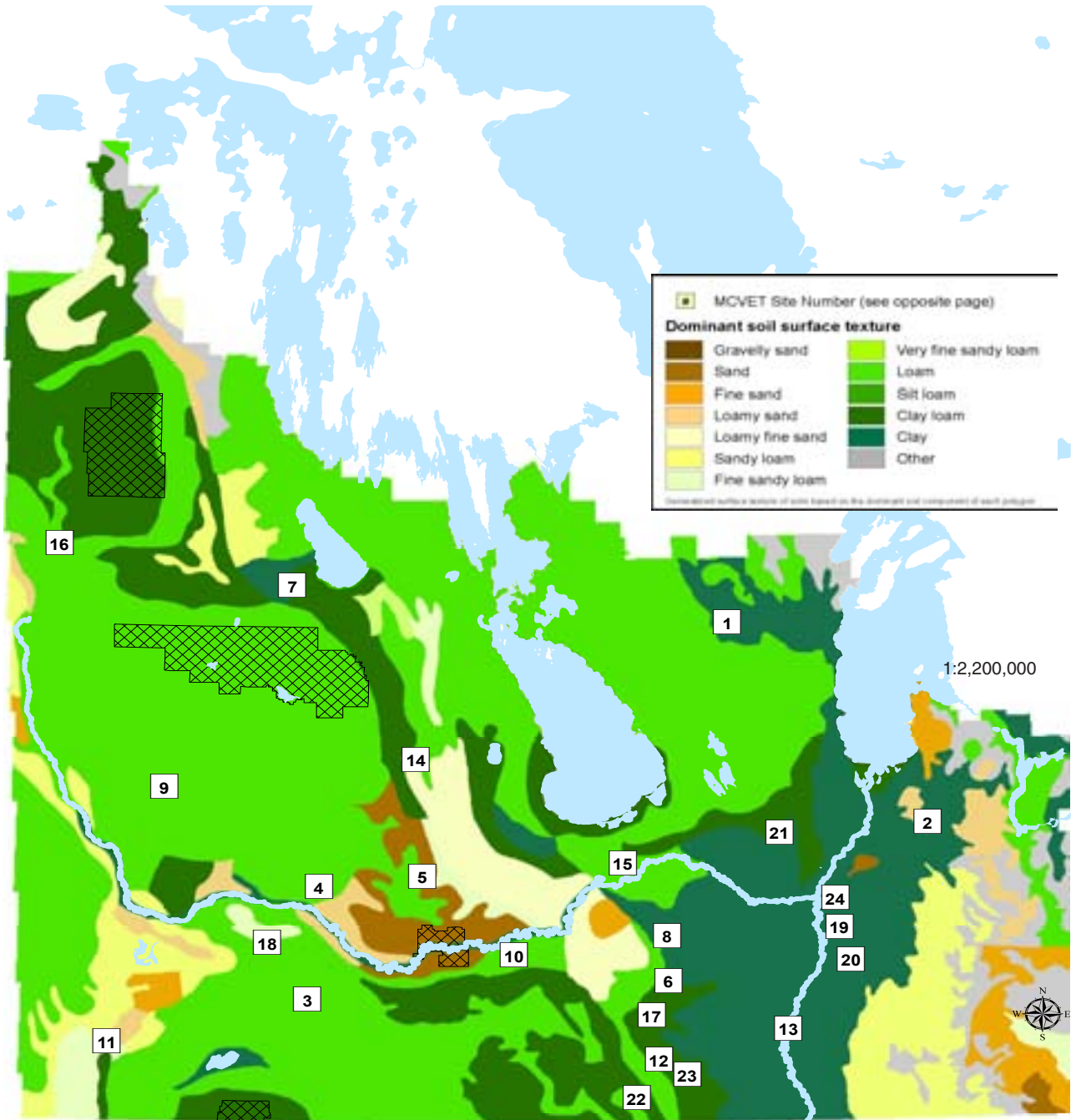


# 2015 LOCATIONS OF VARIETY EVALUATION TRIALS



Canada

Growing Forward

Manitoba

Site Location	Crops Tested	Contractor(s)	Soil Texture	Internal Soil Drainage	Precipitation <sup>1</sup>		Growing Degree Days <sup>1</sup>		Weather Station Used
					Actual (mm)	% of Normal	Actual	% of Normal	
1 Arborg	Spring Wheat, Oats, Barley, Industrial Hemp, Soybean, Fababean, Buckwheat, Silage Corn	PESAI, S.S. Johnson Seeds Ltd.	clay	imperfect	342	104%	1670	113%	MAFRD Arborg
2 Beausejour	Spring Wheat, Oats, Barley, Soybean, Buckwheat	PESAI	clay loam	imperfect	456	126%	1783	104%	MAFRD Selkirk
3 Boissevain	Spring Wheat, Winter Wheat, Durum Wheat, Oats, Barley, Fall Rye, Soybean, Peas	Ag-Quest Inc.	loamy	imperfect	245	79%	1818	108%	MAFRD Boissevain
4 Brandon	Spring Wheat, Oats	Agriculture & Agri-Food Canada	clay loam	well	260	81%	1653	108%	MAFRD Brandon
5 Carberry	Industrial Hemp, Buckwheat	CMCDC	clay loam	well	371	116%	1679	109%	EC Carberry
6 Carman	Winter Wheat, Fall Rye, Soybean, Edible Bean, Grain Corn	University of Manitoba, Ag-Quest Inc.	loam	imperfect	376	113%	1772	105%	EC Carman
7 Dauphin	Spring Wheat, Buckwheat	Ag-Quest Inc.	silty clay loam	imperfect	200	57%	1699	112%	EC Dauphin
8 Elm Creek	Silage Corn, Sunflowers	Ag-Quest Inc.	coarse loam	imperfect	318	96%	1892	112%	MAFRD Elm Creek
9 Hamiota	Spring Wheat, Winter Wheat, Oats, Barley, Fall Rye, Flax, Peas, Soybean, Lentil	Ag-Quest Inc.	clay loam	well	378	133%	1667	109%	MAFRD Hamiota
10 Holland	Sunflowers	Ag-Quest Inc.	clay loam	well	363	112%	1864	111%	MAFRD Treherne
11 Melita	Spring Wheat, Winter Wheat, Durum Wheat, Oats, Barley, Fall Rye, Soybean, Lentil, Peas, Sunflowers, Buckwheat	WADO	loamy	imperfect	431	145%	1808	107%	MAFRD/WADO Melita South
12 Morden	Flax, Soybean, Edible Bean, Grain Corn	Agriculture & Agri-Food Canada	clay loam	well	303	90%	1945	109%	EC Morden
13 Morris	Soybean		heavy clay	imperfect	459	139%	1845	108%	MAFRD Morris
14 Neepawa	Spring Wheat	Syngenta	clay loam	well	371	116%	1679	109%	MAFRD Minnedosa
15 Portage	Spring Wheat, Winter Wheat, Barley, Fall Rye, Soybean, Edible Bean	CROP/ICMS	sandy loam	imperfect	396	119%	1855	109%	MAFRD Portage East
16 Roblin	Oats, Barley, Fall Rye, Flax, Industrial Hemp, Soybean	PCDF	loamy	well	272	78%	1521	105%	29-25-28W
17 Rosebank	Spring Wheat, Barley, Fall Rye, Soybean	Crop Production Services	loam	imperfect	303	90%	1945	109%	EC Morden
18 Souris	Durum Wheat, Barley	Syngenta			247	78%	1744	114%	MAFRD Souris
19 St. Adolphe	Spring Wheat, Oats, Barley, Soybean	Murphy et al. Inc.	heavy clay	imperfect	453	131%	1900	113%	MAFRD St. Adolphe
20 St. Pierre	Grain Corn, Silage Corn				557	179%	1887	115%	MAFRD St. Pierre
21 Stonewall	Spring Wheat, Oats, Barley, Flax	PESAI	clay	imperfect	424	126%	1769	107%	MAFRD Woodlands
22 Thornhill	Spring Wheat, Oats, Barley, Peas	ICMS/ DL Seeds	loamy	well	303	90%	1945	109%	EC Morden
23 Winkler	Edible Bean	AAFC	sandy loam	well	421	125%	1911	107%	MAFRD Winkler
24 Winnipeg	Winter Wheat, Fall Rye	University of Manitoba	silty clay	imperfect	382	110%	1803	108%	EC Winnipeg Airport

<sup>1</sup> Weather data is reported from May 1st to October 4th and reflects the percentage of the normal accumulations as calculated using the long-term average for the past 30 years.

Seeding and harvest dates for individual trials can be found at the bottom of the Yield Comparisons Tables located in the respective Crop Sections.

As per MCVET, MCC, NSAC and MPGA protocol's, all sites are fertilized at levels to achieve maximum crop performance. Weed control is applied as required to achieve a relatively weed free area. Insecticides are applied as required, while fungicides are not applied to any trials.

Any questions related to the sites found in Seed Manitoba 2016 can be directed to the individuals listed below:

**For Canola please contact Anastasia Kubinec at (204) 750-2717 or e-mail [anastasia.kubinec@gov.mb.ca](mailto:anastasia.kubinec@gov.mb.ca).**

**For Grain Corn, please contact Pam de Rocquigny at (204) 750-1584 or e-mail [pamela.derocquigny@gov.mb.ca](mailto:pamela.derocquigny@gov.mb.ca)**

**For all remaining crop types, please contact Craig Linde at (204) 841-4712 or e-mail [craig.linde@gov.mb.ca](mailto:craig.linde@gov.mb.ca)**