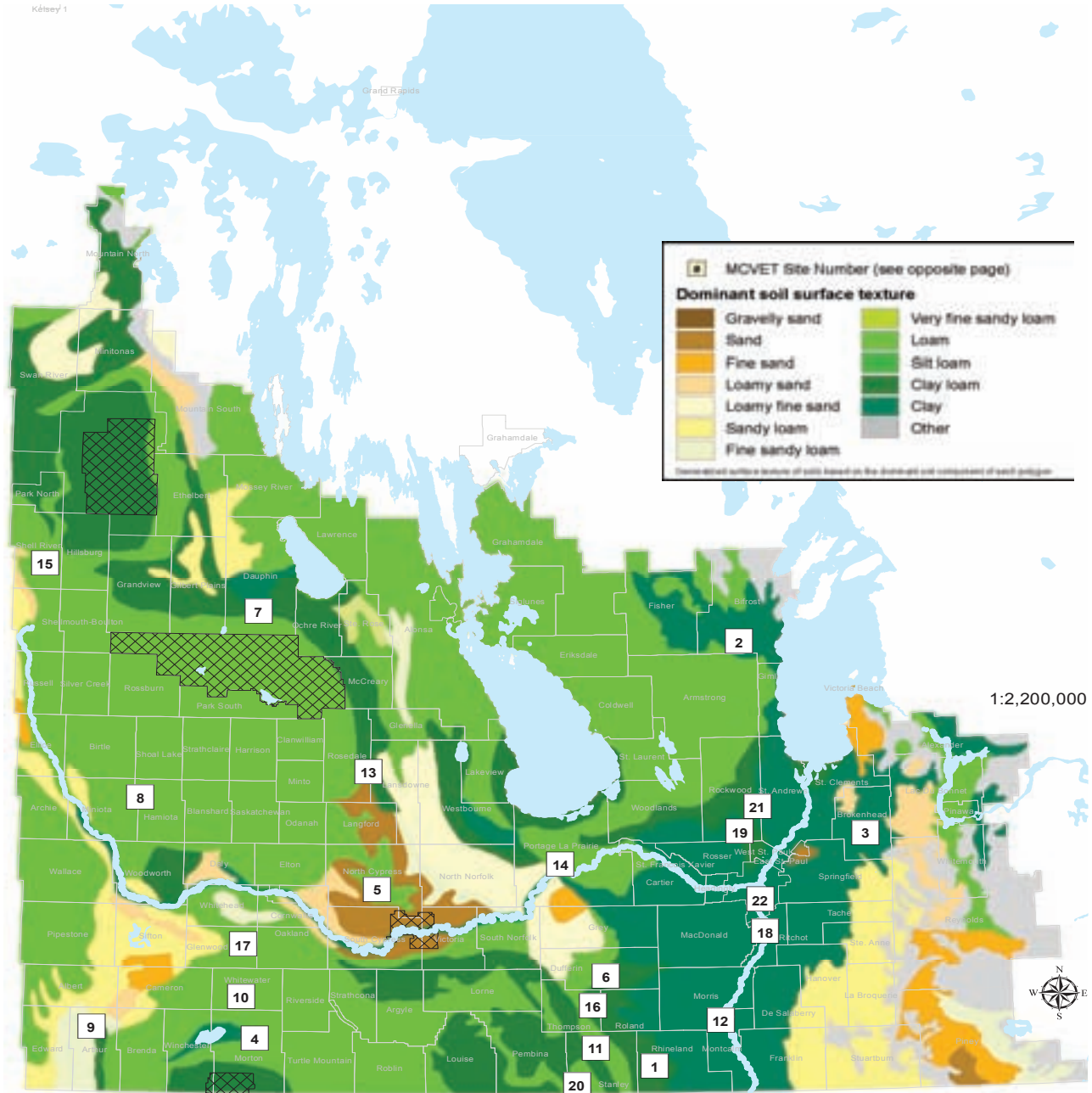


2013 LOCATIONS OF VARIETY EVALUATION TRIALS



Site Location	Crops Tested	Soil Texture	Internal Soil Drainage	Precipitation ¹		Growing Degree Days ¹		Weather Station Used
				Actual (mm)	% of Normal	Actual	% of Normal	
1 Altona	Grain Corn	clay loam	imperfect	310	108%	1603	100%	MAFRD Altona
2 Arborg	Spring Wheat, Oats, Barley, Winter Wheat, Flax, Buckwheat, Industrial Hemp, Soybeans, Edible Beans, Forages	clay	imperfect	209	74%	1416	106%	MAFRD Arborg
3 Beausejour	Spring Wheat, Oats, Winter Wheat, Buckwheat, Soybeans, Grain Corn, Sunflowers	clay loam	imperfect	220	71%	1571	103%	MAFRD East Selkirk
4 Boissevain	Spring Wheat, Durum Wheat, Oats, Barley, Peas	loamy	imperfect	349	134%	1541	102%	MAFRD Boissevain
5 Carberry	Buckwheat, Soybeans, Edible Beans, Forages	clay loam	well	379	140%	1463	105%	EC Carberry
6 Carman	Winter Wheat, Soybean, Edible Bean	loam	imperfect	287	103%	1539	102%	EC Carman
7 Dauphin	Spring Wheat, Oats, Barley	silty clay loam	imperfect	324	114%	1465	107%	EC Dauphin
8 Hamiota	Spring Wheat, Oats, Barley, Flax, Peas, Soybean, Lentil	clay loam	well	335	142%	1455	105%	MAFRD Hamiota
9 Melita	Spring Wheat, Durum Wheat, Oats, Soybean, Buckwheat, Industrial Hemp, Forages	loamy	imperfect	368	149%	1545	102%	MAFRD/WADO Melita South
10 Minto	Sunflowers	loamy	imperfect	349	134%	1541	102%	MAFRD Boissevain
11 Morden	Flax, Peas, Soybeans, Edible Beans	clay loam	well	332	117%	1618	101%	EC Morden
12 Morris	Soybeans	heavy clay	imperfect	317	113%	1599	105%	MAFRD Morris
13 Neepawa	Spring Wheat, Oats, Barley	clay loam	well	243	88%	1373	109%	MAFRD Minnedosa
14 Portage	Spring Wheat, Barley, Oats, Soybeans, Buckwheat, Edible Beans	sandy loam	imperfect	338	121%	1580	103%	MAFRD Portage East
15 Roblin	Soybean, Industrial Hemp, Lentil, Edible Beans	loamy	well	238	82%	1328	101%	EC Roblin
16 Rosebank	Spring Wheat, Oats, Barley, Flax, Soybeans	loam	imperfect	287	103%	1539	102%	EC Carman
17 Souris	Spring Wheat, Durum Wheat, Barley	clay loam	imperfect	429	159%	1510	109%	MAFRD Souris
18 St. Adolphe	Spring Wheat, Oats, Barley, Soybeans	heavy clay	imperfect	320	107%	1646	109%	MAFRD St. Adolphe
19 Stonewall	Spring Wheat, Oats, Barley, Winter Wheat, Flax, Soybeans	clay	imperfect	266	95%	1561	105%	MAFRD Woodlands
20 Thornhill	Spring Wheat, Oats, Barley	loamy	well	360	127%	1630	102%	MAFRD Winkler
21 Warren	Grain Corn	clay	imperfect	266	95%	1561	105%	MAFRD Woodlands
22 Winnipeg	Winter Wheat	silty clay	imperfect	225	76%	1570	104%	U of M (The Point)

¹ Weather data is reported from May 15th to September 15th and reflects the percentage of the normal accumulations as calculated using the long-term average for the past 30 years.

Seeding and harvest dates for individual trials can be found at the bottom of the Yield Comparisons Tables located in the respective Crop Sections.

As per MCVET, MCC, NSAC and MPGA protocol's, all sites are fertilized at levels to achieve maximum crop performance. Weed control is applied as required to achieve a relatively weed free area. Insecticides are applied as required, while fungicides are not applied to any trials.

Any questions related to the sites found in Seed Manitoba 2014 can be directed to the individuals listed below:

For Canola and Sunflowers, please contact Anastasia Kubinec at (204) 750-2717 or e-mail anastasia.kubinec@gov.mb.ca.

For Grain Corn, please contact Pam de Rocquigny at (204) 750-1584 or e-mail pamela.derocquigny@gov.mb.ca

For all remaining crop types, please contact Craig Linde at (204) 841-4712 or e-mail craig.linde@gov.mb.ca