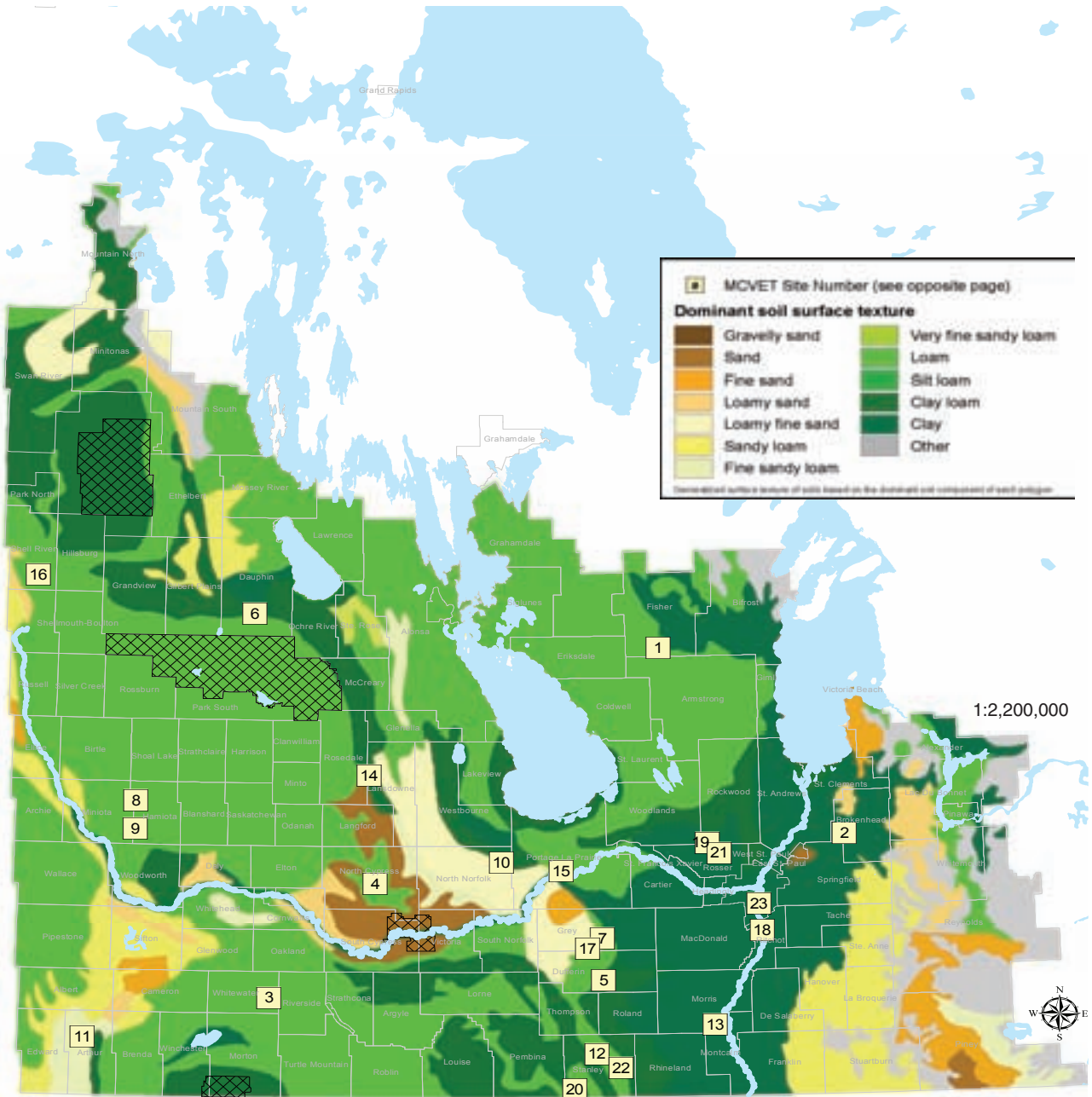


2014 LOCATIONS OF VARIETY EVALUATION TRIALS



Site Location	Crops Tested	Contractor(s)	Soil Texture	Internal Soil Drainage	Precipitation ¹		Growing Degree Days ¹		Weather Station Used
					Actual (mm)	% of Normal	Actual	% of Normal	
1 Arborg	Spring Wheat, Oats, Barley, Winter Wheat, Industrial Hemp, Soybeans, Edible Beans, Fababeans, Peas	PESAI, S.S. Johnson Seeds Ltd.	clay	imperfect	362	121%	1370	99%	MAFRD Arborg
2 Beausejour	Winter Wheat, Soybeans,	PESAI	clay loam	imperfect	389	122%	1413	92%	MAFRD East Selkirk
3 Boissevain	Spring Wheat, Durum Wheat, Oats, Barley, Soybeans, Edible Beans, Peas	Ag-Quest Inc.	loamy	imperfect	340	122%	1496	94%	MAFRD Boissevain
4 Carberry	Winter Wheat, Industrial Hemp, Soybeans, Forages	CMCDC	clay loam	well	359	123%	1382	96%	EC Carberry
5 Carman	Soybean, Edible Bean, Grain Corn	University of Manitoba, Ag-Quest Inc.	loam	imperfect	345	115%	1480	94%	EC Carman
6 Dauphin	Spring Wheat, Oats, Barley	Ag-Quest Inc.	silty clay loam	imperfect	509	165%	1409	99%	EC Dauphin
7 Elm Creek	Silage Corn	Ag-Quest Inc.	coarse loam	imperfect	346	115%	1562	99%	MAFRD Elm Creek
8 Hamiota	Spring Wheat, Oats, Flax, Peas, Soybean, Lentil	Ag-Quest Inc.	clay loam	well	387	152%	1384	96%	MAFRD Hamiota
9 Isabella	Winter Wheat	WADO	clay loam	well	387	152%	1384	96%	MAFRD Hamiota
10 MacGregor	Grain Corn	Ag-Quest Inc.	coarse loam	imperfect	350	118%	1510	97%	MAFRD Treherne
11 Melita	Spring Wheat, Durum Wheat, Barley, Industrial Hemp, Lentil, Peas	WADO	loamy	imperfect	406	150%	1533	97%	MAFRD/WADO Melita South
12 Morden	Soybeans, Edible Beans, Grain Corn	Agriculture & Agri-Food Canada	clay loam	well	277	90%	1581	95%	EC Morden
13 Morris	Soybeans	Murphy et al. Inc.	heavy clay	imperfect	402	133%	1553	97%	MAFRD Morris
14 Neepawa	Spring Wheat, Barley	Syngenta	clay loam	well	415	139%	1284	99%	MAFRD Minnedosa
15 Portage	Spring Wheat, Barley, Oats, Soybeans, Edible Beans	CROP/ICMS	sandy loam	imperfect	332	111%	1499	93%	MAFRD Portage East
16 Roblin	Oats, Barley, Flax, Soybean, Industrial Hemp, Fababeans, Edible Beans	PCDF	loamy	well	328	106%	1230	90%	EC Roblin
17 Rosebank	Spring Wheat, Barley, Flax, Soybeans	Crop Production Services	loam	imperfect	345	115%	1480	94%	EC Carman
18 St. Adolphe	Spring Wheat, Oats, Barley, Soybeans	James Richardson International - Kelburn Farms/Murphy et al. Inc.	heavy clay	imperfect	360	113%	15773	100%	MAFRD St Adolphe
19 Stonewall	Spring Wheat, Oats, Barley, Soybeans,	SCITC/Murphy et al. Inc.	clay	imperfect	393	131%	1502	97%	MAFRD Woodlands
20 Thornhill	Spring Wheat, Oats, Barley, Peas	ICMS/ DL Seeds	loamy	well	277	90%	1581	95%	EC Morden
21 Warren	Grain Corn	PESAI	clay	imperfect	393	313%	1502	97%	MAFRD Woodlands
22 Winkler	Edible Beans	AAFC	sandy loam	well	251	81%	1567	94%	MAFRD Winkler
23 Winnipeg	Winter Wheat	University of Manitoba	silty clay	imperfect	340	107%	1532	97%	EC Winnipeg Airport

¹ Weather data is reported from May 1st to September 14th and reflects the percentage of the normal accumulations as calculated using the long-term average for the past 30 years.

Seeding and harvest dates for individual trials can be found at the bottom of the Yield Comparisons Tables located in the respective Crop Sections.

As per MCVET, MCC, NSAC and MPGA protocol's, all sites are fertilized at levels to achieve maximum crop performance. Weed control is applied as required to achieve a relatively weed free area. Insecticides are applied as required, while fungicides are not applied to any trials.

Any questions related to the sites found in Seed Manitoba 2015 can be directed to the individuals listed below:

For Canola please contact Anastasia Kubinec at (204) 750-2717 or e-mail anastasia.kubinec@gov.mb.ca.

For Grain Corn, please contact Pam de Rocquigny at (204) 750-1584 or e-mail pamela.derocquigny@gov.mb.ca

For all remaining crop types, please contact Craig Linde at (204) 841-4712 or e-mail craig.linde@gov.mb.ca