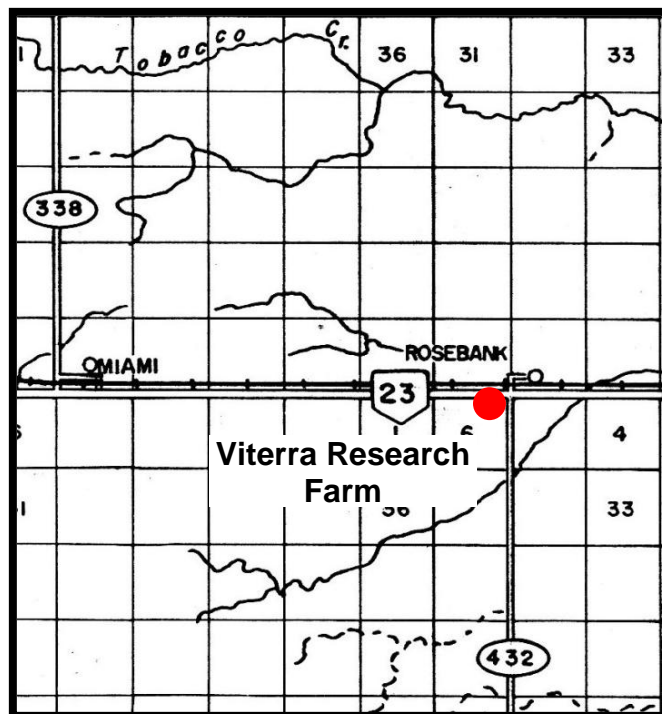


## MANITOBA CROP VARIETY EVALUATION TRIALS (MCVET) 2011

**Location: Rosebank** ([Click on red dot to view detailed site layout](#))

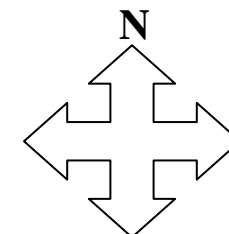
❖ [Site Map – Viterra Site](#)



### Directions:

On Highway 23, 5½ miles east of Miami, turn south at the Viterra Research Farm sign.

To view site, please call ahead to Daryl Rex or Paul Gervais at 204-435-2063.



If you have any questions regarding the MCVET plots please feel free to contact the appropriate person from the list below:

#### Viterra

Paul Gervais  
Research Agronomist  
PH: 204-435-2063

#### MCVET

Craig Linde  
Interim MCVET Coordinator  
PH: 204-841-4712

#### Crops Knowledge Centre

Monika Menold or Heather Wiebe  
Extension Co-ordinator – Industry Focus  
PH: 204-745-5663