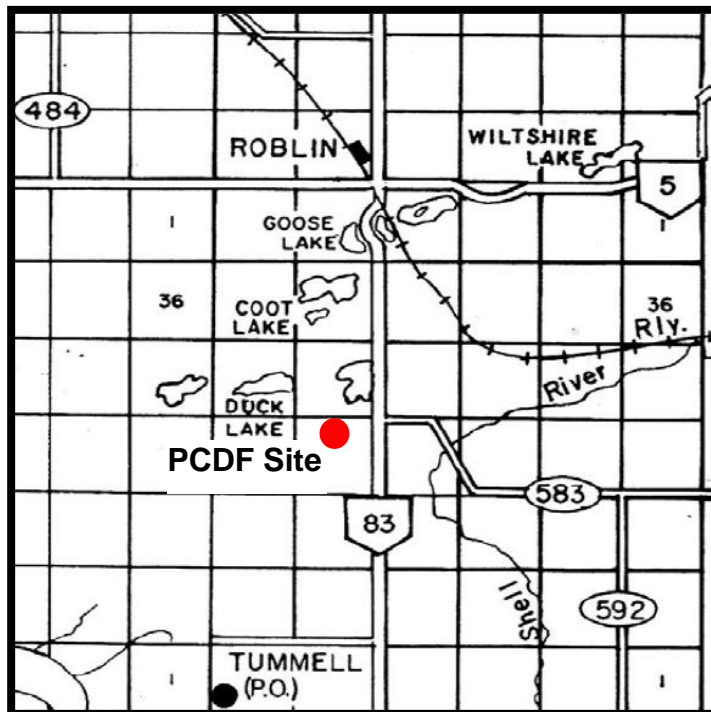
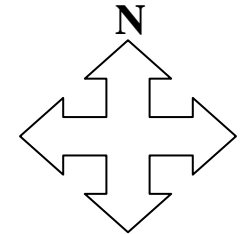


## MANITOBA CROP VARIETY EVALUATION TRIALS (MCVET) 2011

**Location: Roblin** ([Click on red dot to view detailed site layout](#))

❖ [Site Map – PCDF](#)



### Directions:

Please call ahead to view site.

**PCDF Site:** 3 miles south of Roblin on HWY 83, turn west on gravel road 148 N for ¼ mile. Plots are on the south side of road.

If you have any questions regarding the MCVET plots please feel free to contact the appropriate person from the list below:

#### PCDF

Jeff Kostuik  
MAFRI Technician  
PH: 204-773-6178

#### MCVET

Craig Linde  
Interim MCVET Coordinator  
PH: 204-841-4712

#### Crops Knowledge Centre

Monika Menold or Heather Wiebe  
Extension Co-ordinator – Industry Focus  
PH: 204-745-5663