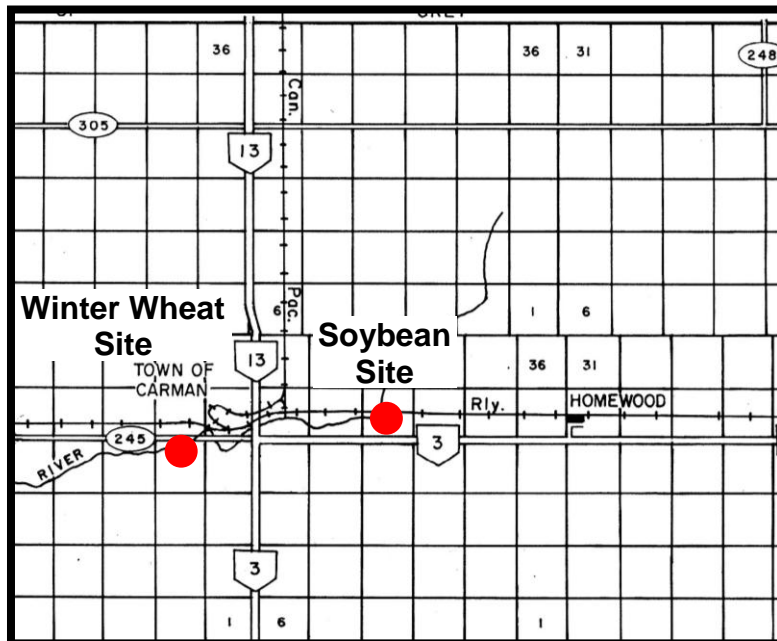
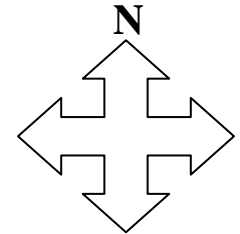


MANITOBA CROP VARIETY EVALUATION TRIALS (MCVET) 2011

Location: Carman ([Click on red dot to view detailed site layout](#))

❖ [Site Map – Winter Wheat Site](#)

❖ [Site Map – Soybean Site](#)



Directions:

Winter Wheat Site: On Hwy 245, 1¼ mile west of lights in Carman, turn into Ian N Morrison Research Farm. Go to the main brick building and ask for Alvin Iverson.

Soybean Site: On Hwy 3, 2 ½ miles east of Carman, turn north at the Hyland Seeds Research Farm (just north of the Monsanto Farm). Plots are north and east of the corn trials on the east side of the driveway.

If you have any questions regarding the MCVET plots please feel free to contact the appropriate person from the list below:

MCVET
Craig Linde
Interim MCVET Coordinator
PH: 204-841-4712

Crops Knowledge Centre
Monika Menold or Heather Wiebe
Extension Co-ordinator – Industry Focus
PH: 204-745-5663