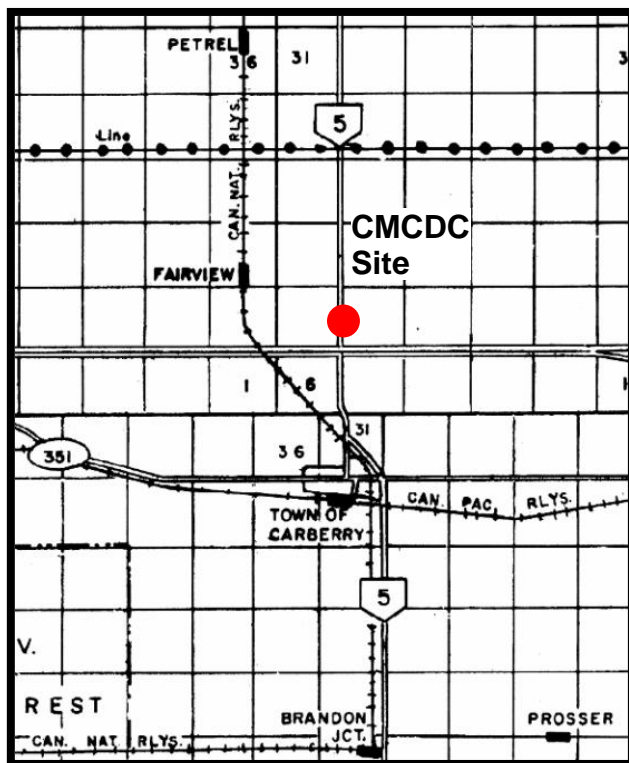


MANITOBA CROP VARIETY EVALUATION TRIALS (MCVET) 2011

Location: Carberry ([Click on red dot to view detailed site layout](#))

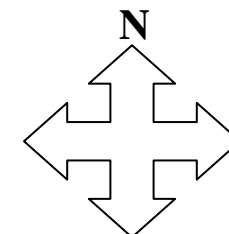
❖ [Site Map – CMCDC](#)



Directions:

CMCDC Site: On Hwy 1, between Portage and Brandon. The cutoff to the CMCDC site is about 75 km west of Portage on Hwy 1. CMCDC site entrance is the 2nd driveway off of Hwy 5.

Call ahead to view site - Craig Linde at 204-841-4712



If you have any questions regarding the MCVET plots please feel free to contact the appropriate person from the list below:

MCVET
Craig Linde
Interim MCVET Coordinator
PH: 204-841-4712

Crops Knowledge Centre
Monika Menold or Heather Wiebe
Extension Co-ordinator – Industry Focus
PH: 204-745-5663