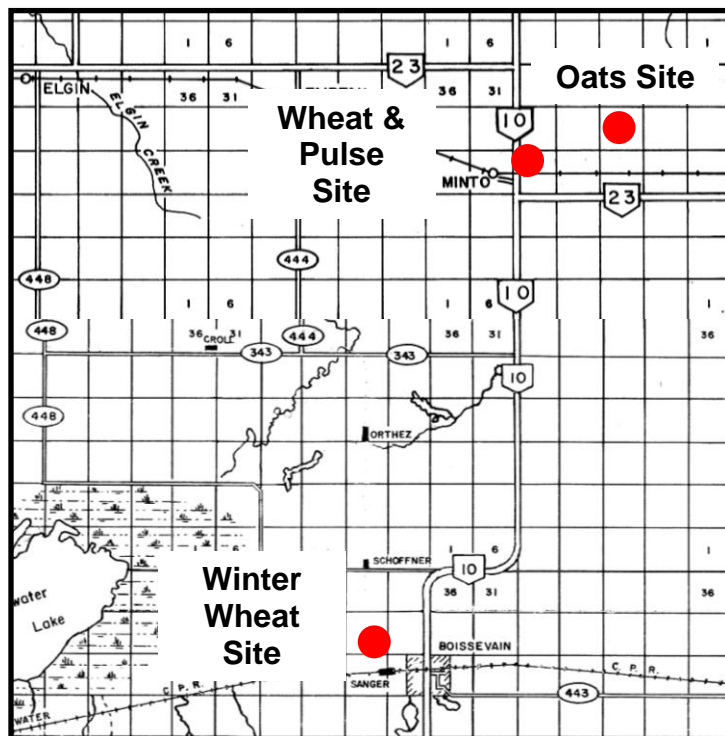
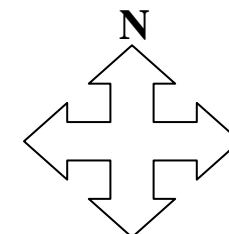


## MANITOBA CROP VARIETY EVALUATION TRIALS (MCVET) 2011

**Location: Boissevain** ([Click on red dot to view detailed site layout](#))

- ❖ [Site Map – Wheat/Pulse Site](#)
- ❖ [Site Map – Oat Site](#)

- ❖ [Site Map – Winter Wheat Site](#)



### Directions:

**Wheat/Pulse Site:** East of Hwy 10 at Minto. The approach is just north of Minto. The plots are in the north-west corner of the section.

**Oat Site:** Travel 1.5 miles north of Minto on Hwy 10. Turn east by Double Diamond on gravel road and travel 2 miles east. Turn south at the old farm yard and travel 1/4 mile, and then turn east. Continue on the field trail, plots are located 200m in.

**Winter Wheat Site:** Travel 1 mile west of Busy-Bee drive-in from 10 Hwy located on north side of Boissevain. Plots are located on north side of the road.

If you have any questions regarding the MCVET plots please feel free to contact the appropriate person from the list below:

**AgQuest**  
Ashley Robertson  
AgQuest  
PH: 204-776-5556

**MCVET**  
Craig Linde  
Interim MCVET Coordinator  
PH: 204-841-4712

**Crops Knowledge Centre**  
Monika Menold or Heather Wiebe  
Extension Co-ordinator – Industry Focus  
PH: 204-745-5663