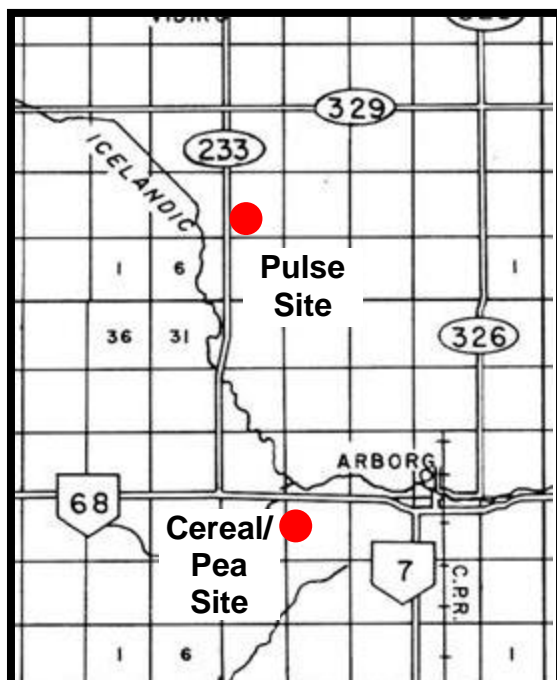
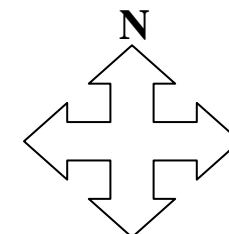


MANITOBA CROP VARIETY EVALUATION TRIALS (MCVET) 2011

Location: Arborg ([Click on red dot to view detailed site layout](#))

❖ [Site Map – Cereal/Pea Site](#)

❖ [Site Map – Pulse Site](#)



Directions:

Cereal/Pea Site: From the junction of Hwy 7 and Hwy 68 in Arborg, travel west on Hwy #68 for 2 miles. Then turn south on RD 8E. Plots on the east side of the road, across the ditch.

Pulse Site: From the junction of Hwy 68 and Provincial Road 233, travel north for four miles along Provincial Road 233. Turn east and the plots are located on the north side of the road.

If you have any questions regarding the MCVET plots please feel free to contact the appropriate person from the list below:

Johnson Seed

Eric Klassen
Pulse Agronomist
PH: 204-453-2514

PESAI

Roger Burak
MAFRI Technician
PH: 204-641-4640

MCVET

Craig Linde
Interim MCVET Coordinator
PH: 204-841-4712

Crops Knowledge Centre

Monika Menold or Heather Wiebe
Extension Co-ordinator – Industry Focus
PH: 204-745-5663