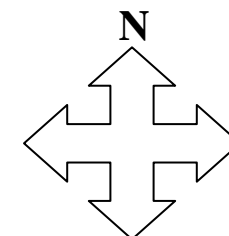
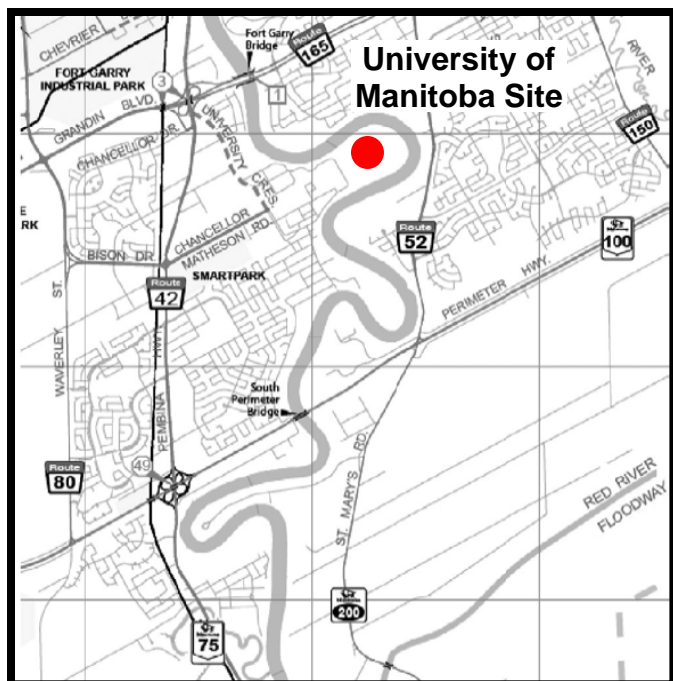


## MANITOBA CROP VARIETY EVALUATION TRIALS (MCVET) 2010

**Location: Winnipeg** ([Click on orange dot to view detailed site layout](#))

- ❖ Site Map – University of Manitoba (The Point)



### Directions:

To get to the Point site at the U of M, take University Crescent past Dafoe Road, around the corner, through the 3-way stops at King's Drive and Maclean Crescent and past a number of greenhouses. Turn right into the gates of the Point just before Freedman Crescent curves sharply to the left. The gate is normally open from 8:00 am to 4:30 pm Monday to Friday.

To view site, please call ahead.

If you have any questions regarding the MCVET plots please feel free to contact the appropriate person from the list below:

#### University of Manitoba

Mary Meleshko  
Technician  
PH: 204-799-4741

#### AAFC

Dennis Green  
PH: 204-795-7351

#### MCVET

Patti Cuthbert  
Agri-Genetics Specialist  
PH: 204-823-0323

#### Crops Knowledge Centre

Monika Menold or Heather Wiebe  
Extension Co-ordinator – Industry Focus  
PH: 204-745-5663