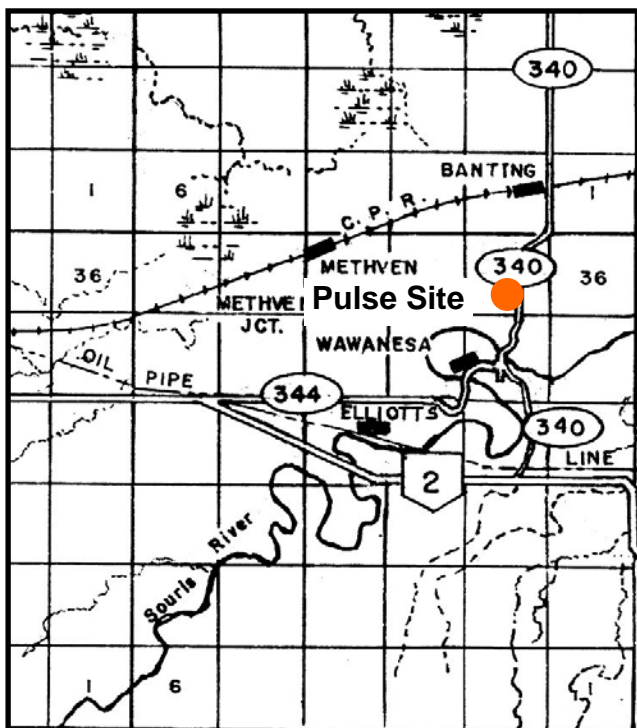
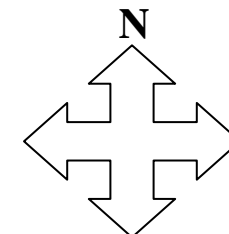


## MANITOBA CROP VARIETY EVALUATION TRIALS (MCVET) 2010

**Location: Wawanesa** ([Click on orange dot to view detailed site layout](#))

❖ [Site Map – Soybean Site](#)



### Directions:

**Pulse Site:** Travel 1½ miles north of Wawanesa on Road # 340. Turn west into Ellis Seeds. The plots are on the north side of the lane.

If you have any questions regarding the MCVET plots please feel free to contact the appropriate person from the list below:

#### WADO

Scott Day  
Diversification Specialist  
PH: 204-534-7633

#### MCVET

Patti Cuthbert  
Agri-Genetics Specialist  
PH: 204-823-0323

#### Crops Knowledge Centre

Monika Menold or Heather Wiebe  
Extension Co-ordinator – Industry Focus  
PH: 204-745-5663