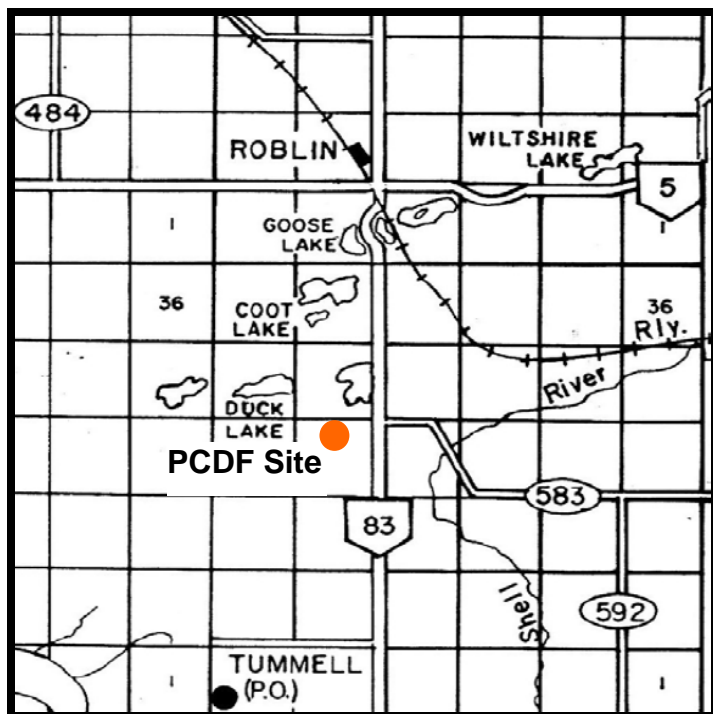
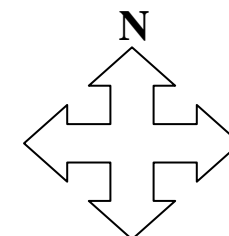


MANITOBA CROP VARIETY EVALUATION TRIALS (MCVET) 2010

Location: Roblin ([click on red dot to view detailed site layout](#))

❖ [Site Map - PCDF](#)



Directions:

Please call ahead to view site. 3 miles south of Roblin on HWY 83, turn west on gravel road 148 N for ¼ mile, plots on south side of road.

If you have any questions regarding the MCVET plots please feel free to contact the appropriate person from the list below:

PCDF

Jeff Kostuik
MAFRI Technician
PH: 204-773-6178

MCVET

Patti Cuthbert
Agri-Genetics Specialist
PH: 204-823-0323

Crops Knowledge Centre

Monika Menold or Heather Wiebe
Extension Co-ordinator – Industry Focus Section
PH: 204-745-5663