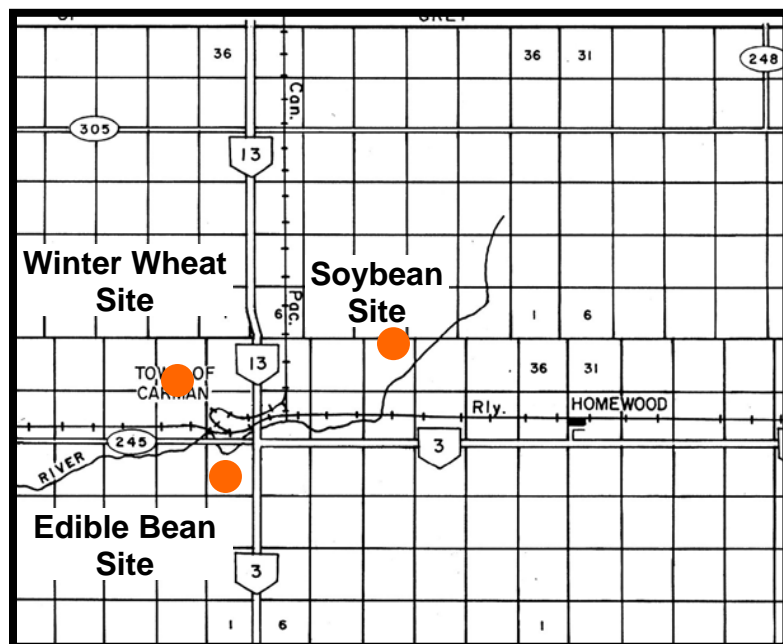
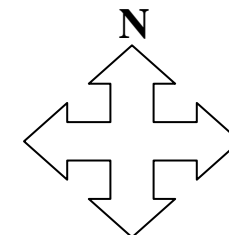


## MANITOBA CROP VARIETY EVALUATION TRIALS (MCVET) 2010

**Location: Carman** ([Click on orange dot to view detailed site layout](#))

- ❖ [Site Map – Soybean Site](#)
- ❖ [Site Map – Winter Wheat Site](#)
- ❖ [Site Map – Edible Bean Site](#)



### Directions:

**Winter Wheat Site:** On Hwy 245, 1¼ mile west of lights in Carman, turn into Ian N Morrison Research Farm. Go to the main brick building and ask for Alvin Iverson.

**Soybean Site:** On Hwy 3, 2½ miles east of Carman, turn north at the Hyland Seeds Research Farm (just north of the Monsanto Farm). Plots are ¼ mile north on west side of gravel road. Enter near the 2<sup>nd</sup> last hydro pole.

**Edible Bean Site:** On Hwy 3, 1 mile south of Carman, turn west. Travel 1 mile, and turn south at the mile road by the Carman Garbage Dump. Travel roughly ½ mile and turn east into field approach. The plots are located southeast of the approach.

If you have any questions regarding the MCVET plots please feel free to contact the appropriate person from the list below:

**MCVET**  
Patti Cuthbert  
Agri-Genetic Specialist  
PH: 204-823-0323

**Crops Knowledge Centre**  
Monika Menold or Heather Wiebe  
Extension Co-ordinator – Industry Focus Section  
PH: 204-745-5663