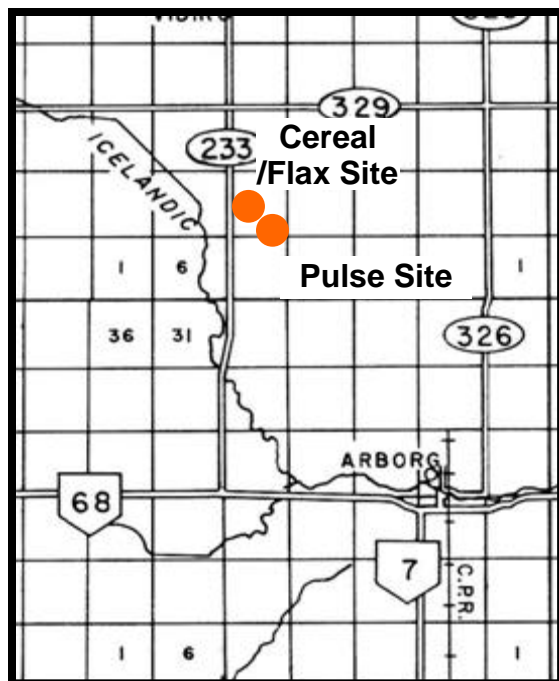


MANITOBA CROP VARIETY EVALUATION TRIALS (MCVET) 2010

Location: Arborg ([Click on orange dot to view detailed site layout](#))

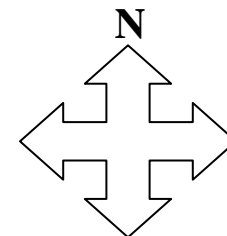
- ❖ [Site Map – Cereal/Flax Site](#)
- ❖ [Site Map – Pulse Site](#)



Directions:

Cereal/Flax Site: Travel 3 miles west of Arborg on Hwy 68. Turn right on Hwy 233 and travel north 4 miles. Plots are on the east side, about 100 meters north of the 4th mile gravel road (#133 intersection).

Pulse Site: Travel 3 miles west of Arborg on Hwy 68. Turn right on Hwy 233 and drive 4 miles north. Turn right on gravel road # 133 and travel east for ½ mile. Plots are on the south side of the road.



If you have any questions regarding the MCVET plots please feel free to contact the appropriate person from the list below:

Johnson Seed
Eric Klassen
Pulse Agronomist
PH: 204-453-2514

MCVET
Patti Cuthbert
Agri-Genetics Specialist
PH: 204-823-0323

Crops Knowledge Centre
Monika Menold or Heather Wiebe
Extension Co-ordinator – Industry Focus
PH: 204-745-5663