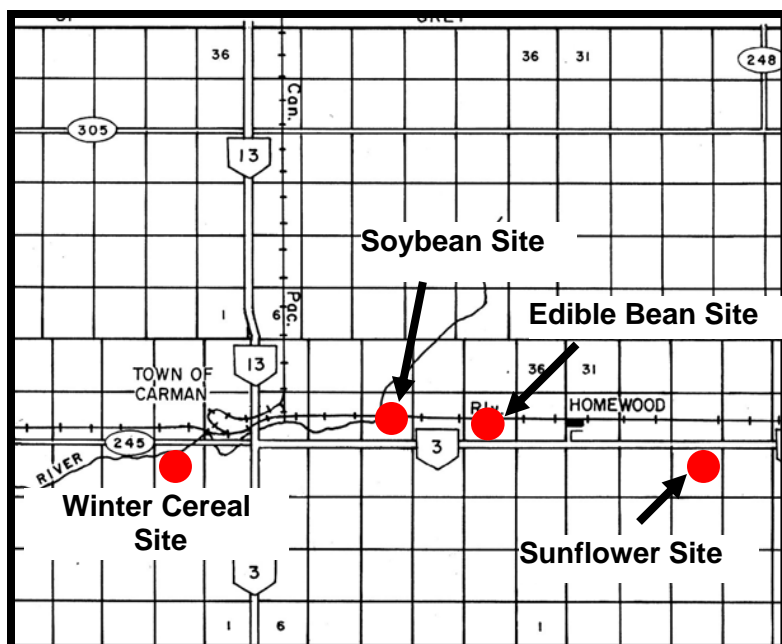
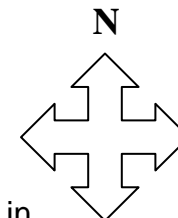


## MANITOBA CROP VARIETY EVALUATION TRIALS (MCVET) 2009

**Location: Carman** ([click on red dot to view detailed site layout](#))

- ❖ [Site Map – Soybean](#)
- ❖ [Site Map – Winter Cereals](#)
- ❖ [Site Map - Sunflowers](#)
- ❖ [Site Map – Edible Bean](#)



### Directions:

**Winter Cereal Site:** On Hwy 245, 1 ¼ mile west of lights in Carman, turn into Ian N Morrison Research Farm. Go to the main brick building and ask for Alvin Iverson.

**Edible Bean Site:** On Hwy 3, 5 ½ miles east of Carman. Turn north of Sask Ferco Rd. at the Coop fertilizer plant, then travel west on the Dufferin Drive leading into the Industrial Park. The bean site is just east of Stream Industries parking lot and south of the gravel road.

**Soybean Site:** On Hwy 3, 2 ½ miles east of Carman, turn north at the Hyland Seeds Research Farm (just north of the Monsanto Farm). Plots are 1/4 mile north on east side of gravel road. Walking access is opposite 2<sup>nd</sup> last hydro pole.

**Sunflower Site:** On Hwy 3, 3 miles east of Homewood. Plots are located on the south side of the highway.

**Manitoba Corn Committee Site:** Call Pam de Rocquigny, Chair of the Manitoba Corn Committee, for information on the corn hybrid performance trial at 204-750-1584.

**If you have any questions regarding the MCVET plots please feel free to contact the appropriate person from the list below:**

MCVET  
Roger Burak  
Technician  
PH: 204-641-4640

Crops Knowledge Centre  
Monika Menold or Heather Wiebe  
Extension Co-ordinator – Industry Focus Section  
PH: 204-745-5663