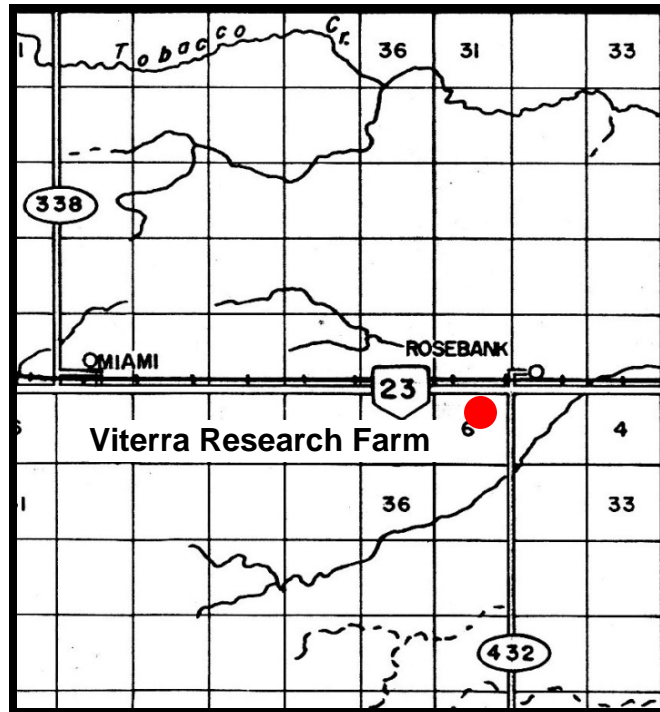


MANITOBA CROP VARIETY EVALUATION TRIALS (MCVET) 2009

Location: Rosebank ([click on red dot to view detailed site layout](#))

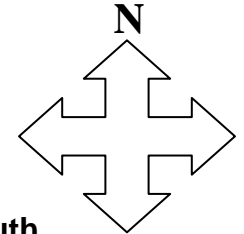
❖ [Site Map - Viterra](#)



Directions:

On Highway #23, 5 ½ miles east of Miami turn south at the Viterra Research Farm sign.

To view site, please call ahead to Daryl Rex or Paul Gervais at 204-435-2063.



If you have any questions regarding the MCVET plots please feel free to contact the appropriate person from the list below:

Viterra

Paul Gervais
Research Agronomist
PH: 204-435-2063

MCVET

Roger Burak
Technician
PH: 204-641-4640

Crops Knowledge Centre

Monika Menold or Heather Wiebe
Extension Co-ordinator – Industry Focus
PH: 204-745-5663