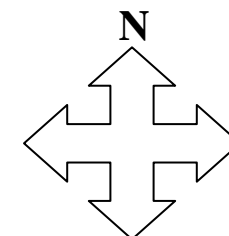
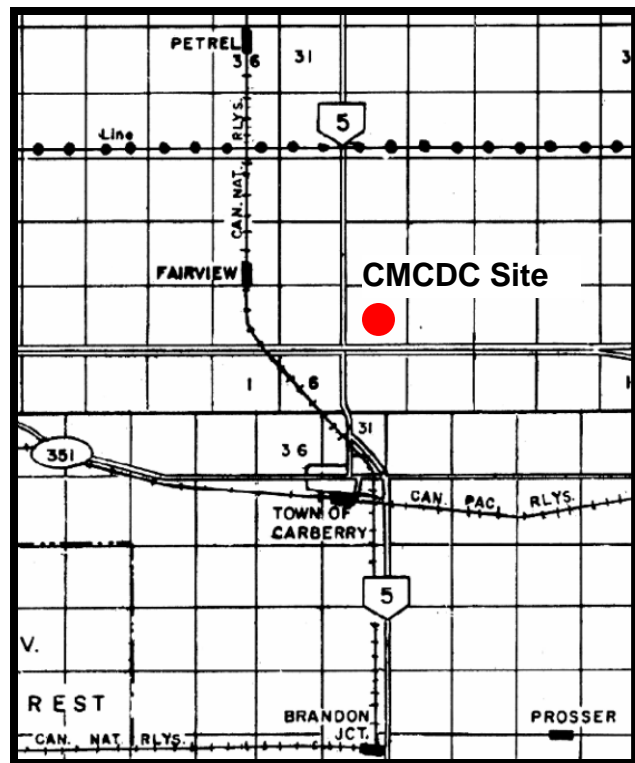


MANITOBA CROP VARIETY EVALUATION TRIALS (MCVET) 2009

Location: Carberry ([click on red dot to view detailed site layout](#))

❖ Site Map – CMCDC



Directions:

CMCDC Site: On Hwy 1, between Portage and Brandon. The cutoff to the CMCDC site is about 75 km west of Portage on Hwy 1. CMCDC site entrance is the 2nd driveway off of Hwy 5.

Call ahead to view site - Amanda Leitner at 204-834-6010 or John Bandor at 204-841-0169

If you have any questions regarding the MCVET plots please feel free to contact the appropriate person from the list below:

CMCDC

John Bandor
Technician
PH: 204-841-0169

CMCDC

Amanda Leitner
Technician
PH: 204-834-6010

MCVET

Roger Burak
MCVET Technician
PH: 204-641-4640

Hemp

Keith Watson
MAFRI – Hemp Specialist
PH: 204-622-2009

Crops Knowledge Centre

Monika Menold or Heather Wiebe
Extension Co-ordinator – Industry Focus
PH: 204-745-5663